

23 Games
In this issue!

CAROLINA GAMBIT

Vol XXXIV

\$1.00

No. 5

NORTH CAROLINA CHESS ASSOCIATION

Sep-Oct 1985

NCCA OFFICERS

PRESIDENT/Leland L. Fuerstman/320 Seneca Pl/Charlotte/ 28210
VICE-PRES/Robert N. Singletary/3712 Dade St/Raleigh/ 27612
SEC-TREAS/Kenneth J. Baxter/7111 Terrace Dr/Charlotte/ 28211
EDITOR-PT/Leland L. Fuerstman/320 Seneca Pl/Charlotte/ 28210

NCCA POLICY

Annual dues are \$6.00 for adults and \$4.00 for juniors under 18. (After January 1, 1986, dues will be \$10.00 for adults and \$8.00 for juniors, \$3.00 for participating juniors). Membership is open to all, however, only N.C. residents may vote, hold office, or compete in the N.C. Invitational Championship. Each member is entitled to play in NCCA sponsored events and will receive the Carolina Gambit published six times per year. Games, articles, tournament reports, and other materials for the Gambit are welcome and necessary. All dues and questions concerning membership shall be submitted to Ken Baxter. All tournament results in the form of a copy of the official USCF printout will be submitted to Robert Singletary for N.C. Grand Prix calculation and official record. All other contributions such as synopsis of event, section winners, interesting incidents, upsets, and just games will be sent to Leland Fuerstman. The next issue will be published around December 15.

INTERNATIONAL NEWS:

FIDE Championship Match Even After 13th Game

Moscow--The current championship match between Champion Anatoly Karpov and Challenger Gary Kasparov stands even after the 13th game with each player having two wins. Round 11 of that event produced the following incredible miniature: White: Kasparov Black: Karpov
1 d4 Nf6 2 c4 e6 3 Nc3 Bb4 4 Nf3 0-0 5 Bg5 c5 6 e3 cd 7 ed h6 8 Bh4 d5
9 Rcl dc 10 Bc4 Nc6 11 0-0 Be7 12 Rel b6 13 a3 Bb7 14 Bg3 Rc8 15 Ba2
Bd6 16 d5 Nd5 17 Nd5 Bg3 18 hg ed 19 Bd5 Qf6 20 Qa4 Rd8 21 Rcd Rd7 22
Qg4 Rcd 23 Qd7! Rd7 24 Re8+ Kh7 25 Be4+ g6 26 Rd7 1-0

North Carolina Player Receives Invitation to U.S. Championship!

Charlotte--International Master Vincent McCambridge, who recently arrived in Charlotte to accept a position with the CMSCA, has received and accepted an invitation to play in the U.S. Championship scheduled to begin October 20 in Colorado. (GM Norm 9) Good luck Vince! Do it!

FLASH Dana Nance of Durham is Crowned N.C. Champion, Kevin Kirby Wins Amateur Title -- Complete story on p. 2 --

1986 Scholastics Championships Open for Bids--If interested in organizing the 1986 N.C. Elem. & Primary for April 12-13 or the Jr. High & High School for April 19-20, send bids by Dec. 1 to: NCSCA, 4600 Fairview Rd., Suite 302, Charlotte, N.C. 28210



NORTH CAROLINA CHESS ASSOCIATION

MESSAGE FROM THE CHAIRMAN OF THE BOARD

By Leland L. Fuerstman

We came, we saw, we conquered! Armed only with a cargo of T-shirts which read, "Bobby Fischer! Then and Now - The Undeclared World Chess Champion", we took our seats in the massive ballroom of Miami's luxurious Diplomat Hotel as the USCF Annual Business Meeting was called to order by President Steven Doyle. The North Carolina contingency consisting of myself, CMSCA President Larry Goldberg, Charlotte Chess Club Secretary Jim Tobin, GM Lev Alburt, and GM Yasser Seirawan had come prepared. (See Chess Life, Nov.85, p. 22, "The Fischer Motion: USCF Democracy in Action", By Larry Parr).

The room was buzzing with excitement as Delegate Motion #13 was read by Secretary Woodrow Harris. I presented a passionate opening speech (which was co-authored by Charlotte Chess Club Vice-President Christopher D Worley), Lev Alburt followed, and then the verbal see-saw battle of pro and con began, each speaker expressing great emotion and genuine concern. Finally, GM Yasser Seirawan proposed a substitute motion which was passed almost by acclamation. The USCF was to write a letter to Mr. Fischer "asking whether he considers himself the retired World Champion, or the active World Champion, and if active, then who, where, when, and for how much does he wish to play?" (I have a copy of the official letter in my possession).

Political victory aside, just rubbing shoulders with the finest Grandmasters and chess notables of the day would have been enough: I met John Collins, presented a T-shirt to K.K. Karanja, played speed chess with FIDE President Florencio Campomanes and witnessed a "1" minute speed chess match between GM Yasser Seirawan and GM Roman Dzindzighashvili (Yaz won 5-2!). It was a chess weekend I will never forget. And now we wait for Bobby's answer...

34th Annual North Carolina Championship: Nance & K. Kirby Win Titles

by Christopher D Worley

The state's richest ever championship tournament (\$2,500 in prizes guaranteed by the Charlotte Observer!), seething with controversy and oozing with luxury, took place in Charlotte's Radisson Plaza Hotel over the Labor Day weekend. Ninety players vied for the prize fund in the two section event. The winners were North Carolina Champion Dana Nance from Durham and North Carolina Amateur Champion Kevin Kirby from Charlotte.

Dana Nance, an Assistant Professor of Calculus at Duke University, scored 5 points out of 6 to take home \$500 and the title. Described by tournament organizer Leland L. Fuerstman as "affable", Nance eschewed the first place trophy in deference to an out-of-state master who finished with a slightly higher result. NM Rusty P. returned to rural Virginia after the tournament, taking with him \$500 of what was intended to be prize money for N.C. players only.

Kevin Kirby, a 16-year-old junior at Independence High School in Charlotte, scored 5½ which earned him the Amateur Champion trophy and \$550. (more cash than anyone). A careful and tenacious player, Kirby waits like a cool Petrosian for his opponent to err. After only 4 years, his rating is but a few points shy of Expert.

continue on p. 14

The CMSCA: Stronger Every Day!

By IM Vincent McCambridge

The Charlotte-Mecklenburg Scholastic Chess Association's 1985-86 program is well under way, and the strong results are starting to appear - such as 12 year old Jillian Sharer's clear victory in her section at the Salisbury Open of October 5! We're looking forward to a great year of chess activity, with trips to state and national tournaments, weekend workshops, and a full slate of chess instruction on the agenda.

As many Gambit readers already know, I have accepted the position of Executive Director and Chief Instructor of the CMSCA. My reasons for taking this position are simple: This history making program is really the first such program of its kind in this country; it is an opportunity to introduce chess, on a large scale, into the community. Naturally, the challenge to make the program a success is a great one, and there are no guarantees. But I have been so impressed by the quality of people dedicated to the royal game here in Charlotte and indeed, in all of North Carolina, that I am convinced we can be successful in our ambitions.

Any scholastic player, or group, from Kindergarten to High School, interested in our program should contact me or Jillian Goldberg at 704-366-9265.

By no means do we intend to limit our coaching services to the Charlotte area. In fact, we are now booking dates for workshops, seminars, and simultaneous exhibitions in all areas of North Carolina. Also, adults interested in volunteering their time as coaches (a great way to improve your own chess!) please contact us. Seminars for adults, as well as private chess lessons for adults will be available as the program progresses.

With your participation and support, we can go a long way towards giving chess, "the gymnasium of the mind", an important role in education and the community.

Cunningham Survives Late Charge; Wins Grand Prix

By Robert N. Singletary

Robin Cunningham from Chapel Hill survived a late charge from Charlotte's Kevin Kirby to win the 1984-85 North Carolina Grand Prix garnering first prize of \$100. The new Grand Prix format, designed by Leland Fuerstman, encouraged the exciting conclusion as Kevin nearly made up a 42-point deficit with a 5.5 score in the North Carolina Championship. Robin's victory was by a mere 1/6 of a point, forcing the points' keeper to double and triple check the results for accuracy.

Matthew Noble from Raleigh finished third with Leland Fuerstman and Jim Tobin, both from Charlotte, finished tied for fourth. North Carolina State Champion Dana Nance finished a strong sixth.

Here are the Official Top 20 Scores of the '84-'85 N.C. Grand Prix:

1. Robin Cunningham	48.17	11. Alan Patrick	24.50
2. Kevin Kirby	48.00	12. David Schmidt	23.50
3. Matthew Noble	39.17	13. Michael Buaiz	23.00
4. Leland Fuerstman	38.00	14. Wayne Stuart	22.75
5. Jim Tobin	38.00	15. Greg Samsa	19.25
6. Dana Nance	37.25	16. Greg Bogosian	19.00
7. Joseph Francis	27.00	17. Simon Frohman	19.00
8. Miles Hunt	27.00	18. Michael Meredith	19.00
9. Ben Henson	25.75	19. Jay Porter	18.67
10. Neal Harris	25.00	20. Roger Steward	18.00
		21. Ronald Simpson	18.00

1986 NCCA POSTAL CHESS CHAMPIONSHIP TO BEGIN IN JANUARY; USCF RATED
 By Donald V. Miller, II -Tournament Secretary-

After many months of communication and planning, the NCCA will officially sponsor the 1986 Postal Chess Championship according to the following rules:

1) The NCCA Postal Chess Championship is open to North Carolina residents who are, and remain USCF and NCCA members for the duration of the event.

2) Groups of seven (7) players of varying strengths will compete in the two stage event (preliminaries & finals) playing six (6) games in each round; three white & three black.

3) All players who score five (5) or more points will advance to the finals. (If necessary, players with the next highest score will fill remaining groups; highest postal rating taking precedence).

4) Prizes will be awarded according to entries. (Complete list will be published in Jan-Feb GAMBIT).

5) This rated tournament will be conducted according to the most recent version of the USCF Postal Rules, however, upon entering, each contestant agrees that the decision of the NCCA shall be final in all matters regarding the conduct of the tournament including acceptance and classification of entries, the adjudication of games, the distribution of prizes, and all other interpretations of rules.

6) An entry fee of Ten Dollars (\$10.) must be postmarked before March 31, 1986 and mailed to: NCCA, C/O Donald V. Miller, II, P.O. Box 888, Beaufort, N.C. 28516 (Pairings processed Jan 2, 1986)

7) A player may enter up to five (5) times, paying \$10 for each, provided he applies early enough to allow placement.

CURRENT LIST OF ALL NORTH CAROLINA POSTAL PLAYERS

POSTAL MASTER

1. J. Callaway	1744	21. D. Thomasson	1160	48. D. Propst	900
		22. D. Miller	1158	49. L. Frazier	894
		23. W. Henson	1154	50. H. Harper	884

POSTAL CANDIDATE MASTERS

		24. K. Kelly	1134	51. M. Hollander	868
2. N. Hornstein	1690	25. D. Leary	1120	52. J. Reynolds	856
3. R. Stancil	1600	26. J. Walsh	1110	53. B. Hiatt	854
4. F. Montakhab	1528	27. K. Savage	1104	54. O. Sulaiman	850
		28. Z. Filis	1102	55. J. Whiteheart	816
		29. W. Foster	1088	56. J. Harris	804

POSTAL CLASS "A"

		30. G. Laialona	1086	57. J. Branton	796
5. R. Lombard	1436	31. D. Grant	1078	58. S. Wright	782
6. B. Nielsen	1392	32. R. Burgin	1072	59. R. Donaldson	780
7. G. Hall	1390	33. D. Medling	1064	60. P. Adland	710
8. J. Wright	1382	34. C. Herndon	1060	61. D. Keyser	710
9. G. Klintworth	1368	35. J. Skipper	1048	62. M. Kelly	700
10. A. Duvall	1320	36. W. Turnier	1046		

11. D. Haimes	1300	37. D. Woolfolk	1038	<u>POSTAL CLASS "D"</u>	
12. S. Osman	1300	38. B. Garner	1028	63. R. Babb	644

POSTAL CLASS "B"

13. B. Roberts	1290	39. A. Cramer	998	64. M. Sparrow	600
14. J. Fowler	1266	40. J. Welch	984	65. C. Williams	600
15. J. Schwartz	1258	41. J. Arroba	982	66. T. Anderson	550
16. T. Duran	1200	42. S. Brosnan	966	67. S. Warr	494
17. W. Simpson	1200	43. A. Ragouzeos	960	68. D. McCormick	426
18. W. Warren	1198	44. M. Bellows	912		
19. R. Fentress	1176	45. K. Kirby	912		
20. G. Greer	1166	46. R. Fleuriot	906		
		47. S. Long	900		

*****GAMES OF N.C. PLAYERS*****

Edited by National Master

Leland L. Fuerstman

SEND CONTRIBUTIONS TO:

320 Seneca Place

Charlotte, N.C. 28210

0048 ENGLISH OPENING

1985 N.C. Championship, 8-31-85
 NEWSOM (1921) STEWARD (1844)
 1 Nf3 c5 2 g3 Nc6 3 Bg2 g6 4 0-0
 Bg7 5 c4 e5 6 Nc3 Nge7 7 d3 0-0
 8 Be3 d6 9 Nh4 Rb8 10 Qd2 a6 11
 Bg5 Qc7 12 Bh6 b5 13 Bg7 Kg7 14
 cb ab 15 f4 Be6 16 f5 Nf5 17 Nf5
 gf 18 Qg5+ Kh8 19 Nd5 Bd5 20 Qf6+
 Kg8 21 Rf5! Ne7 22 Rg5+ Ng6 23
 Bd5 Qd8 24 Rg6+! hg 25 Qg6+ Kh8
 26 Qh6+ Kg8 27 Be4! f5 28 Bd5+
 1-0

0049 FRENCH DEFENSE

1985 N.C. Championship, 9-2-85
 HENSON (2146) CALLOWAY (1925)
 1 e4 e6 2 d4 d5 3 Nd2 Nf6 4 e5
 Nfd7 5 Bd3 c5 6 c3 Nc6 7 Ne2 cd
 8 cd b6 9 0-0 Nb4 10 Bb1 Ba6 11
 Nb3 Rc8 12 a3 Nc6 13 f4 g6 14 Rf3
 Be2 15 Qe2 Nd4 16 Nd4 Rcl+ 17 Rf1
 Qc8 18 g3 Qc4 19 Rcl Qcl+ 20 Kg2
 Bc5 21 Bg6 Qal 22 Bf7+ Ke7 23 Nc6+
 Kf7 24 Qh5+ Kf8 25 Qh6+
 1-0

0050 QUEEN'S GAMBIT ACCEPTED

1985 N.C. Championship, 9-1-86
 FEINSTEIN (2314) CUNNINGHAM (2174)
 1 d4 d5 2 c4 dc 3 Nf3 Nf6 4 Nc3
 Nc6 5 d5 Na5! 6 Qa4+ c6 7 b4 b5!
 8 Qa5! Qa5 9 ba5 b4 10 Nd1 cd5 11
 Rbl! N Rb8! 12 Nd4 e5! 13 Nc6
 Bf5 14 Rb2 Rb5 15 Bb2 d4 16 Bb4 c3
 17 Bc3 dc3 18 Rb5 c2 19 Kd2 Ne4+
 20 Kc2 Nf2+ 21 Kd2! Nh1 22 g4!+-
 23 Bg2 Bd6 24 Ne5 Be5 25 Re5+ Kd7
 26 Bh1 Rc8 27 Nc3 f6 28 Rb5 Be6
 29 a6 Bc4 30 Rb7+ Rc7 31 Nb5 1-0
 (Submitted by both players for
 best game prize. Although Black
 may have been too aggressive, his
 fighting spirit and White's accu-
 rate defense made this a real
 struggle. Notes by Feinstein)

0051 LATVIAN GAMBIT

1985 N.C. Championship, 9-2-85
 NANCE (2084) MAGEE (2059)
 1 e4 e5 2 Nf3 f5! 3 Ne5 Qf6 4 d4
 d6 5 Nc4 fe 6 Nc3 Qg6 7 Qe2 Nf6 8
 Bf4 Be7 9 Ne3 c6 10 d5 0-0 11 0-0-0
 Ng4 12 h3 Rf4 13 hg Bg5 14 f3 ef
 15 gf c5 16 Kbl Qf7 17 Ne4 Re4 18
 fe Qf4 19 Rh3 h5 20 Rf3 Qe4 21 gh
 Na6 22 Qf2 Bf6 23 Rf6 gf 24 Qf6
 Qe3 25 Bd3 Qg3 26 h6
 1-0

0052 BISHOP'S OPENING

1985 N.C. Championship, 9-2-85
 HARRIS (2239) NANCE (2084)
 1 e4 e5 2 Bc4 Nf6 3 d3 Bc5 4 Nc3
 d6 5 Na4 0-0 6 Nc5 dc 7 Be3 Qd6 8
 Qf3 Nc6 9 Ne2 Nd4 10 Nd4 cd 11 Bd2
 Be6 12 Bb3 c5 13 0-0 b5 14 Be6 Qe6
 15 c3 Rac8 16 Qg3 Rc6 17 a4 b4! 18
 cd cd 19 Bb4 Rb8 20 Ba3 Nh5 21 Qf3
 Nf4 22 Rac1 Rb3 23 Rcd1 Rc2 24 g3
 Qh3 25 Be7 Rd3! 26 Rd3 Ne2+ 27 Qe2
 Re2 28 Rb3 f5 29 ef e4 30 Rcl e3
 31 Re3 de 32 Bc5 Rf2
 0-1

0053 RUSSIAN DEFENSE

1985 N.C. Championship, 8-31-85
 CUNNINGHAM (2174) SCHMIDT, D (1700)
 1 e4 e5 2 Nf3 Nf6 3 Ne5 d6 4 Nf3
 Ne4 5 d4 d5 6 Bd3 Be7 7 0-0 Nc6 8
 Rel Bg4 9 c4 Nf6 10 cd Nd5 11 Nc3
 0-0 12 Be4 Be6 13 a3 Re8 14 Qd3 h6
 15 Bd2 Nc3 16 bc Bd5 17 Bh7+ Kh8
 18 Bf5 Qd6 19 Ne5?! Ne5 20 de Qc6
 21 Qh3 Rad 22 Bf4 Bc5 23 Bg5 Be7 24
 Bf4 Be6 25 g4 Bf5?! 26 gf Qa4 27
 Bh6! gh 28 Qh6 Kg8 29 Re3 Bh4 30
 Khl Bf2 (30...Qc6+ 31 Qc6 bc 32
 Rgl+ Kf8 33 Rh3 Bf2 34 f6!+- or 30
 ...Qg4 31 f3!+-) 31 Rgl+
 1-0

0054 RUY LOPEZ

1985 N.C. Championship, 9-1-85
 DULIN (1925) CHAPPELL (2050)
 1 e4 e5 2 Nf3 Nc6 3 Bb5 a6 4 Ba4
 Nf6 5 0-0 b5 6 Bb3 Be7 7 Rel d6 8
 h3 Na5 9 c3 c5 10 Bc2 0-0 11 d4 cd
 12 cd Nc6 13 Nc3 Bb7 14 d5 Nb8 15
 Ne2 Nbd7 16 g4 Kh8 17 Ng3 g6 18 Bh6
 Rg8 19 Ng5 Qe8 20 Ref Bf8 21 Bf8
 Qf8 22 f4 h3 23 fe de 24 Nf3 Rac 25
 d6 Ne8 26 Qd2 Nd6 27 Rad Rc6 28 Bb3
 Kh7 29 Bf7 Qf7 30 Ng5+ hg 31 Rf7+
 1-0

0055 ENGLISH OPENING

1985 N.C. Championship, 9-1-85
 LEE (1780) NEAL (1634)
 1 c4 e5 2 Nc3 Nf6 3 g3 d5 4 e3 d4 5
 ed ed 6 Qe2+ Be7 7 Nd1 0-0 8 Bg2
 Re8 9 Qd3 Bc5 10 Ne2 Qe7 11 h3 Bf5
 12 Qf3 Be4
 0-1

0056 SICILIAN DRAGON

1985 N.C. Championship, 9-1-85
 LANE (1676) LEE (1780)
 1 e4 c5 2 Nf3 Nc6 3 d4 cd4 4 Nd4
 Nf6 5 Nc3 g6 6 Be3 d6 7 Be2 Bg7 8
 0-0 0-0 9 f4 Qb6 10 e5 de5 11 fe5
 Ne5 12 Nf5 Qb7 13 Ne7+ Kh8 14 Bd4
 Rd8 15 Rf6 Rd4 16 Qd4 Qa1+ 17 Kf2
 Bf6 18 Qd8+ Kg7 19 Qg8+ Kh6 20 Qf8+
 Kg5 21 h4+ 1-0

0057 VIENNA OPENING

1985 N.C. Championship, 9-2-85
 LIPKIN, M (1216) MILLER (1671)
 1 e4 e5 2 Nc3 Nf6 3 f4 ef 4 Nf3 d5
 5 ed Nd5 6 Bc4 Nc3 7 bc3 Qe7+ 8
 Kf1! Bg9 4 d4 g5 10 Kf2 Qd6 11 Bf7+
 Kd7? 12 Ne5+ Kd8 13 Qg4 Be7 14 Re1
 Nc6 15 Ba3! Qa3? 16 Qd7# 1-0

0058 GIUOCO PIANO

1985 N.C. Championship, 9-2-85
 MUTHA (1659) HARGROVE (1750)
 1 e4 e5 2 Nf3 Nc6 3 Bc4 Bc5 4 c3
 Nf6 5 d4 ed 6 cd Bb5+ 7 Nc3 Ne4 8
 0-0 Bc3 9 d5 Bf6 10 Re1 Ne7 11
 Re4 d6 12 g4 h6 13 Bd2 Kf8 14 Qc2
 Ng6 15 Rae Bd7 16 Nd4 Bd4 17 Rd4
 Qf6 18 Bc3 Re8 19 Rde4 Qd8 20
 Rle3 Re4 21 Qe4 Qg5 22 h3 Qf4 23
 Qd3 Ne5 24 Be5 de5 25 d6! c6 26
 Bf7 e4 27 Re4 1-0

0059 RUY LOPEZ

1985 N.C. Championship, 9-1-85
 DULIN (1925) NANCE (2084)
 1 e4 e5 2 Nf3 Nc6 3 Bb5 a6 4 Ba4
 d6 5 Bc6 bc 6 d4 f6 7 de fe 8 Ne5!?
 de 9 Qh5+ Kd7 10 Qe5 Qf6 11 Qg3 Bc5
 12 0-0 Bb7 13 Rd1+ Ke8 14 Nc3 Bd6
 15 f4 g5 16 e5 Bc5 17 Kh1 Qf5 18 fg
 Bf2 19 Qd3 Qd3 20 Rd3 c5 21 Be3? c4
 (Probably White's only clear blund-
 er in this game is 21 Be3? - I rec-
 ommend 21 Nd1!) 22 Bf2 cd 23 cd Ne7
 24 Rcl Rf8 25 Kgl Rd8 26 d4 c5 27
 d5 Nd5 28 Ne4 Nf4 29 Nf6+ Rf6 30 gf
 Ne2+ 31 Kf1 Ncl 32 Bc5 Rd1 0-1

0060 KING'S INDIAN ATTACK

1985 N.C. Championship, 9-2-85
 SPURRIER (1981) ERB (2111)
 1 g3 Nf6 2 Bg2 g6 3 e4 d6 4 Nc3 Bg7
 5 d3 e5 6 f4 Nc6 7 Nf3 Bg4 8 h3 Bf3
 9 Qf3 Nd4 10 Qf2 Qe7 11 Be3 Nc6 12
 0-0 h6 13 Rae 0-0 14 fe Ne5 15 d4
 Nc4 16 Bcl c6 17 b3 Nb6 18 Ba3!
 Nbd7 19 e5 Ne8 20 Ne4 c5 21 ed Nd6
 22 Nc5 Qd8 23 Qf4 Nf5 24 Nd7 Qd7 25
 Bf8 Qd4+ 26 Qd4 Bd4+ 27 Kh2 Rf8 28
 Be4 Ne3? 29 Rf3 f5 30 Rle3 fe4 31
 Rf8+ Kf8 32 Re4(+ -) Bc5 33 Kg2 Kf7
 34 Kf3 a5 35 Ke2 b6 36 Kd3 Kf6 37
 g4 h5 38 Kc4 hg 39 hg Bgl 40 Kb5
 Kg5 41 a3 Kh4 42 c4 g5 43 b4 ab 44
 ab 1-0

0061 ENGLISH OPENING

L.P.O. #12, 7-27-85
 SCHMIDT, D (1747) KIRBY, K (1791)
 1 c4 Nf6 2 Nc3 e6 3 d4 d5 4 cd5
 ed5 5 Bq5 Be7 6 Qc2 c6 7 e3 0-0 8
 Nge2 Na6 (I have to be different;
 Nbd7=) 9 Ng3 Nc7 10 Bd3 h6 11 h4
 Ng4 12 Bh7+! Kh8 13 Be7 Qe7 14
 Bf5 Ne8 15 0-0-0 Nd6 16 Bd3 Ne3!
 17 Qe2 Nf5 18 Qe7 Ne7 19 Rhe Nef5
 20 Nf5 Bf5 21 Ne2 Rfe 22 Bc2 Bc2
 23 Kc2 Re4 24 g3 Rae 25 Kd3 Nf5
 26 f3 Re3+ 27 Kd2 Rf3 28 Rf1 Rf1
 29 Rf1 Re2+! (Notes by K.K.) 0-1

0062 CLOSED SICILIAN

U.S. OPEN, 8-14-85
 KIRBY, K (1805) NANEZ (2040)
 (After drawing with three experts
 in rds. 7, 8, & 9, I finally beat
 one in rd. 10) 1 e4 c5 2 Nc3! (I
 saw Spasski play this on Bds. 1 &
 2 in several rounds, so I decided
 to try it out) 2...Nc6 3 g3 g6 4
 Bg2 Bg7 5 d3 d6 6 f4 e6 7 Nf3 Nge
 8 0-0 0-0 9 Be3 Nd4 10 Qd2! (I don't
 think Spasski would play this, but
 I saw a game in which A. Dunne
 crushed Black's King side with Qd2
 and Nd1) 10...Rb8 11 Nd1 d5 12 Nh4
 b6 13 e5 Ndf5 14 Nf5 Nf5 15 d4 cd4
 16 Bd4 Nd4 17 Qd4 f6 18 Nc3 Ba6 19
 Rfel fe5 20 fe5 Qd7 21 Rad Rf5 22
 Bh3 Bf8? 23 Ne4! Rc8? 24 Bf5 gf
 25 Nf6+ Kg7 26 Nd7 Be7 Qa4 (KK) 1-0
 (Kevin Kirby is the 1985 North
 Carolina Amateur Champion, LLF)

0063 KING'S INDIAN DEFENSE

1985 Golden Knights Postal, '84-'85
 KIRBY, K (1300) LYNCH, M (1000)
 1 d4 Nf6 2 c4 g6 3 Nc3 d5 4 cd Nd5
 5 e4 Nc3 6 bc c5 7 Bc4 Bg7 8 Ne2
 0-0 9 0-0 Nc6 10 Be3 Qc7 11 Rcl Rd8
 12 Qd2 Qa5 13 Qb2 b6 14 f4 cd 15 cd
 Bb7 16 f5! Qb4 17 Qb4 Nb4 18 fg Ba6
 19 gh7+ Kh7 20 Ba6 Na6 21 Rf7 Rd7
 22 d5 Nb4 23 Bd4 Rg8 24 a3! 1-0

0064 QUEEN'S GAMBIT ACCEPTED

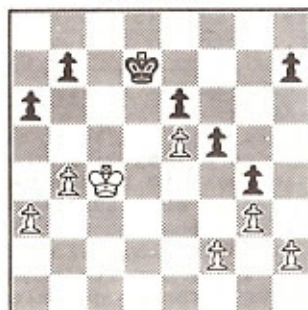
I.C.C.F. Postal, '83-'84
 KIRBY, K (1300) THOMPSON, R (1200)
 1 d4 d5 2 c4 dc 3 Nf3 Nf6 4 e3 e6
 5 Bc4 c5 6 0-0 a6 7 Qe2 Nc6 8 Nc3
 b5 9 Bb3 c4 10 Bc2 Bb7 11 Rd1 Be7
 12 e4! 0-0 13 d5 ed 14 e5! Nd7 15
 Nd5 Nb4 16 Nb4 Bb4 17 e6! fe6? 18
 Qe6+ Rf7 19 Ne5! Qe8 20 Qf7+! Qf7
 21 Nf7 1-0

0065 FRENCH DEFENSE

Panjandrum II, 9-25-85

POSNANSKI (1825) FUERSTMAN (2155)
 1 d4 e6 2 e4 d5 3 Nc3 Nf6 4 Bg5 Be7
 5 e5 Nd7 6 Be7 Qe7 7 Bb5 a6 8 Bd7
 Bd7 9 Qg4 f5 (9...f6! is more thematic and would avoid the eventual "lock-jaw" on the King side) 10 Qh5+ g6 11 Qe2 c5 12 Nf3 Nc6 13 Rdg5! 14 dxc4 15 Nd4 Qc5 16 Qe3 0-0-0 17 a3 Rdf-18 b4 Qe7 19 Qf4! Qg7 20 Nc6 Bc6 21 Ne2! Rd8 22 Nd4 Rhe 23 Rd3 Rd7 24 g3? Rc7 25 Kd2 Ba4! 26 Rcl Rc4 27 Qe3 Qc7 28 Rc3 Kd7! 29 Nb3 (This very legitimate looking move leads to a pretty conclusion for Black) 29...Rc3! 30 Qc3 Qc3+ 31 Kc3 Bb3! 32 Kb3 (If 32 cb3 Rc8+ 33 Kb2 Rcl 34 Kcl d4! followed by ...Kc6, Kd5, etc.) 32...Rc8 33 c4? (White must avoid the trade of Rooks to stay alive) 33...dxc4 34 Rc4 Rc4 35 Kc4 (Diagram)

FUERSTMAN



POSNANSKI

Position after White's 35th move
 (At first glance, one would think that White has a slight advantage in this position; after all, he has an equal number of pawns on both wings, his King is on the 4th rank and Black's is on the 2nd, and he has an advanced center pawn which appears to impede the progress of the Black King, not to mention Black's backward pawn formation. But, a closer observation of the position will reveal that 1) Black's pawn on g4 restricts the advance of three of White's pawns on the King-side, 2) Black's valuable "h" pawn now has two tempi to spend at its leisure, 3) oddly enough, White's position is dead lost!...Caissa sometimes works in strange ways!) 35...Kc6! 36 a4 (Or 36 b5+ ab+ 37 Kb4 b6!-4) 36...b5+ 37 ab+ ab+ 38 Kd4 h6!!@ Zugzwang! (Notes by Fuerstman) 0-1

NOT FOR AMATEURS ONLY

By Chris D Worley

(K+6P - Vs. - K+5P)

The following game transposes precariously into a Sicilian Defense on move 10. Black, annoyed by White's broad reach all over the board, works very hard for counterplay. While lagging in development, Black sets up a net to snare a pawn. The time consumed (three tempi) gives White plenty of compensation. But, Black's fatal 16th move is a real loser, giving White a roaring attack on Black's backward formation, as punctuated by Black's limitations on move 21. Black's pawns were left so disjointed that White had no problem mopping up. Black, who is the 1985 N.C. Amateur Champion fortunately played on to mate. We therefore have a very instructive King & Pawn ending for this column. The winning technique is excellent instruction for anyone rated below 1800, and is good review of basic principles for anyone else.

0066 SICILIAN DEFENSE

Panjandrum II, 9-18-85

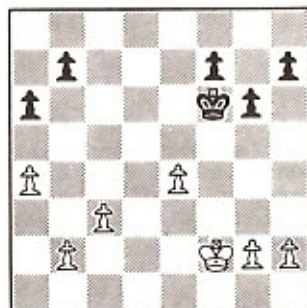
WORLEY (1786) KIRBY, K (2001)

1 e4 d6 2 d4 Nf6 3 Nc3 g6 4 Bg5!? (RR 4 Be3!? c6 5 Qd2 b5 6 Bd3 Nbd7 7 Nf3!± M. Chandler - Nunn, London 1984; 4 Be2 Bg7 5 h4 Nc6 6 h5 e5 7 h6 Bf8 8 Nf3 Bg4 (8...ed4 9 Nd4 Be7 10 Bf4! Malunjuk - Guss-ejnov, USSR 1984) 9 de! de 10 Qd8 Rd8 11 Bg5 Be7 12 Bf6 Bf6 13 Nd5± M. Chandler 37/135) 4...Nbd (4...Bg4 5 Qd2±) 5 Bc4 Bg7 6 Qd2 c5!? 7 Nf3 Qc7 8 Bb3 a6?! (8...c4! 9 Ba4 a6! 10 Bd7 Bd7 11 Bh6 Bh6 12 Qh6 b5!±) 9 a4 Qa5 10 0-0!? cd 11 Nd4 Ne4 (RR 11...Ne4?!± 11...Nc5!) 12 Ne4 Qd2 13 Bd2! (13 Nd2? Bd4 14 c3 Bg7 15 Rfe e6!±; 15 Ne4 0-0±) 13...Bd4 14 c3 Bg7?! (14...Bc5) 15 Rfe!±→ 0-0 16 Bg5 Nf6? (±16...e6) 17 Nf6 Bf6 18 Bf6 ef+- 19 Rad Bd7 20 Rd6 Rae 21 Re8 Be8 (21...Re8? 22 Bf7+! Kf7 23 Rd7+-) 22 Rf6 Kg7 23 Rd6 Bc6 24 f3 Re 25 Kf2 Re5 26 Bc2 (±B4) 26...Rd5? 27 Rd5 Bd5 28 Be4! Be4 29 fe Kf6

(Diagram)

Position after Black's 29th move

Kirby, K



WORLEY

30 Ke3 (The basic strategy involved is to use the Queen-side majority to force Black's King away from a defenseless King-side. White will conserve tempi until the Black King is forced to move back.)

(Note: Numbering error; continue with 31...Ke5)

31...Ke5 (Black could have tried 31...b6, but then White wins with 32 Kd4, & 33 b4 after which 33...b5 34 ab ab 35 c4 luring the Black King and enabling the White King to eat up King-side pawns) 32 a5!! (This could have been played as well on the previous move, it is true. When played now, however, it gains White the opposition in addition to creating a serious weakness. The one pawn holding back two is a typical end-game tactic. Notice that 32 b4?? is a lemon since Black can play 32...b5, and now it is White who will have the backward pawn and probably only a draw, because Black will have more tempi to spend on the King-side.) 32...h5?! (And now that the tempo war has begun, Black spends "two" of his! It is usually better in K & P endings to advance a pawn only one square if you are down material since most drawing motifs involve having the opposition in order to force the adversary to abandon his pawn or else make no progress, i.e. has no tempi left) 33 b4 (White pushes two squares to make the majority roll quickly, and still maintains the opposition) 33...g5 34 c4 h4 35 b5 g4 (Not 35...ab?? 36 ba and Black's King must retreat immediately) 36 ba!

(White will, after Black's forced recapture, push the passed c-pawn which the Black King will have to chase) 36...ba 37 c5 (Now, Black has a sum total of two tempi to spend: ...f6 or g6/h6) 37...f6 38 c6! Kd6 (Forced) 39 Kf4 Kc6 40 Kf5 (If Black now goes after the a-pawn, White queens in five moves. Such situations in K & P endings are much easier if counted rather than figured by if-then calculation. Here, for example, we see that White Queens in five -vs- Black Queens in eight wins for White. This is easier than thinking through 1...Kb5 2 Kf6 Ka5 3 e5 Kb4 4 e6 a5 5 e7 a4 6 e8(Q)+- and avoids any errors in calculating twelve half-moves) 40...Kd7 41 Kf6 Ke8 (If 41...Kd8 42 Kf7 Kd7 43 e5 +-) 42 Ke6! (Now that Black has one tempo left (...g6/h6) whereas White has two (e5 or g3/h3), White takes the opposition) 42...g3 43 hg hg 44 e5! (Forcing the Black King to give ground) 44...Kd8 (If 44...Kf8 45 Kd7) 45 Kf7 (And White Queens). (Notes by Worley) 1-0

GAMBIT SUBMISSION

By Ray Freeman

It's been a long time since I sent in anything to the GAMBIT, and since I'll be leaving the state soon, I thought that I should leave something for the chess community here to remember me by. Here are two games that I am fairly proud of because they were efficient executions. It is not too often that one gets to play a game where you can look back and see no obvious superfluous moves.

0067 RUY LOPEZ

Atlantic Open, Dec 1983

FREEMAN, R (1900) GAVIN (2000)

1 e4 e5 2 Nf3 Nc6 3 Bb5 a6 4 Ba4 Nf6 5 0-0 Be7 6 Re b5 7 Bb3 0-0 8 d4 Nd4 9 Bf7+ Rf7 10 Ne5 Nc6 11 Nf7 Kf7 12 e5 Ne8 (ECO 2 ends at 12 Nq8 with no evaluation given of the position) 13 Nc3 Kg8 14 Bf4 Bg5 15 Bg5 Qg5 16 Qd5+ Kh8 17 Rad h6 18 Rd3 Rab? (Although this unpins Black's Queen Knight, this is inadequate. However, it already may be too late for Black to save the game) 19 Rf3 Qe7 20 Rf7 Qb4 21 a3 (Forcing Black's Queen to leave the a3-f8 diagonal is decisive) 21...Qb2 22 Rf8+ Kh7 23 Qg8+ Kg6 24 Qf7+ Kh7 25 Qe8

1-0

0068 FRENCH DEFENSE (EXCHANGE)
 Virginia Open, Jan 1984
 SNAPP (2050) FREEMAN (1900)
 1 d4 e6 2 e4 d5 3 ed ed 4 Nf3 Nf6
 5 Bd3 Bg4 (5...Bd6 is given in ECO
 2. It is probably better as it
 saves a tempo over Black's contin-
 uation) 6 0-0 Be7 7 Bf4 (Taking
 the active diagonal) 7...0-0 8
 Nbd2 Bd6 (I realized that I had to
 neutralize his bishop now since I
 want to put my Queen Knight on d7)
 9 Bg5 Nbd7 10 c3 c6 11 Qc2 Qc7 12
 Bf5 Bf5 13 Qf5 h6 14 Bh4 Rae1 15
 Rae Qb8! 16 Bg3 Re1 17 Re1 Bg3 18
 hg Rfe 19 Ne5 Re6! (Continuing my
 policy of neutralization and taking
 advantage of the pin on the e file)
 20 Ndf3 Qe8 21 Re3 Ne4 22 Nd3?
 (20 Nd7 Qd7 21 Ne5 is obviously
 better) 22...Nf2 23 Nfe5 (23 Nde5
 with the idea of g4 was worth try-
 ing) 23...Nd3 24 Rd3 Ne5 25 de5
 Re5 26 Qf4 Qe6! 27 Rd2? (Losing
 instantly) 27...Rf5 28 Qg4 Rfl+
 0-1

0069 ENGLISH OPENING
 Think Fast 1, 9-14-85
 WILLIAMS, T (1479) ALSBERRY (2069)
 1 c4 Nf6 2 Nc3 b6 3 d3 Bb7 4 e4 e5
 5 Nf3 Nc6 6 Bg5 Be7 7 Nd5 Nd5 8
 cd5 Bg5 9 dc6 Bc6 10 Ne5 0-0 11
 Nc6 dc 12 Be2 Qd4 13 Qc2 Bf6 14
 Rb1 Qb4+ 15 Kd1 c5 16 Bf3 Rad 17
 Ke2 Bg5 18 Rhd Rd6 19 Kf1 Rfd 20
 a3 Qb5 21 Be2 Rh6 22 Kgl Bf4 23 g3
 Be5? 24 d4 Qc6 25 de Re8 26 Qd3
 Re5 27 Qa6 Qe4 28 Bf3!! 1-0
 (Congratulations to Theresa who
 demonstrated great patience against
 her Expert opponent, LLF)

GM Yasser Seirawan, who recently
 played two simos in Charlotte
 during the 34th Annual North
 Carolina Championship, will com-
 pete in the Inter-Zonal Finals
 to be held in Montpeiller, France
 later this month. The rest of
 the field will include: Korchnoi,
 Ribli, Smyslov, Yusupov, Beliavsky,
 Portisch, Chernin, Timman, Nogue-
 ras, Spraggett, Tal, Vaganian,
 Sokolov, Short, & Spasski(?).

The 1985-86 Grand Prix will enjoy the same exciting format as
 this year - for every tournament advertised in the Gambit players are
 awarded One Grand Prix point for each Win, and One Bonus Point per
 round for being 1st in his 8 man section. Draws earn no points. For
 every additional 8 players in a section, the clear winner will earn
 One additional bonus point per round. Players who tie for first will
 divide bonus points equally. A four round tournament earns four bonus
 points, a five rounder, five, etc. (i.e. a 3-round, 16 man section
 would qualify for 6 bonus points). Players are encouraged to keep up
 with their own Grand Prix total for further verification. Remember,
 Directors, it is vitally important that you promptly send a copy of
 the USCF Printout of results to Robert N. Singletary.

NORTH CAROLINA CHESS ASSOCIATION
 September 1, 1985
 Minutes, Annual Business Meeting

President Leland Fuerstman called the meeting to order at
 10:00 at the Raddison Plaza Hotel, Charlotte, NC.

All the officers were present:

Leland Fuerstman--President
 Robert Singletary--Vice President
 Kenneth Baxter--Secretary and Treasurer

* A quorum of NCCA members was present (approximately 50)

Singletary discussed last years minutes which were accepted by
 unanimous vote.

Leland presented Larry Goldberg with a clock for his many
 contributions to scholastic chess. Larry accepted clock and spoke
 about the future of scholastic chess in NC.

Baxter gave the treasurer's report which was approved unanimously.
Don Miller reported on the proposed postal chess tournament
Singletary reported on the clearing house

The absentee ballot voting for a \$2 dues increase was tallied and the results were 2 for and 6 against. This is not a quorum.

Motion from the floor to make dues \$10 per year for adults, \$8 per year for juniors under 18 years old and \$3 per year for participating juniors (no magazine) effective January 1, 1986.
Motion was seconded and passed with only 8 votes against

Life membership is available at 20 times the current adult rate: \$120 up to 12/31/85 and \$200 thereafter.

Motion made and seconded for approval of write-in voting policy--passed unanimously.

Committee for bringing the US Open to North Carolina formed with the following individuals volunteering to serve:

- | | | |
|----------------|------------------|-------------------|
| Ken Baxter | Leland Fuerstman | Robert Singletary |
| Larry Goldberg | Donald Miller | Chris Worley |
| Jim Dutton | Jim Tobin | Steve Greenlee |
| Dan Petranick | | |

Any others interested contact Ken Baxter.

Treasurer's Report
By Kenneth J. Baxter

North Carolina Chess Association

STATEMENT OF ASSETS, LIABILITIES AND FUND BALANCE

August 31, 1985

ASSETS

Cash	\$3,925
Accounts receivable--Charlotte Observer	391

TOTAL ASSETS	4,316
	=====

LIABILITIES AND FUND BALANCE

Prize fund for NC Championship	\$2,300
Brilliancy prize fund	200
Charlotte Observer Bonus prize fund	500
Rating fee	71
Director's fee	50
Gran Prix prize fund	100
Reserve for life members	720
Reserve for Current members	525

	4,466
Fund Balance	(150)

TOTAL LIABILITIES AND FUND BALANCE	\$4,316
	=====

34TH N.C.CHAMP

CHARLOTTE

START DATE: 08/31/85 END DATE: 09/02/85

	PLAYER	ST	RTNG	PRE	POST	1	2	3	4	5	6	TOT
1	POTTER,JOHN RUSSE	VA	2286		2327	w36	w=3	D33	w=9	w12	w11	5.5
2	KIRBY,KEVIN	NC	1959		1996	w49	w43	D18	w32	w24	w=7	5.5
3	NANCE,DANA W	NC	2105		2144	w39	L=1	w61	w64	w33	w15	5.0
4	FREEMAN,JOHN	NC	1784		1797	w69	w68	L45	w54	w23	w25	5.0
5	DUTTON,JR JAMES C	NC	1781		1813	w78	L=7	w51	w50	w44	w=8	5.0
6	POWELL,THOMAS J	NC	1709		1790	w53	w59	D17	w18	D=8	w21	5.0
7	MUTHA,VINAY	NC	1659/13		1772	w83	w=5	w56	w45	w17	L=2	5.0
8	FLEMING,ANGELO V	NC	1565		1672	x==	w22	w19	D24	D=6	L=5	5.0
9	SPURRIER,JR ROBER	NC	1999		2085	D82	w66	w34	L=1	w29	w33	4.5
10	BRIDGES,TERRY LEE	NC	1660		1683	D72	w79	w20	L17	x==	w38	4.5
11	KOLVICK,HANDY S	NC	2363		2351	w35	D30	w14	D12	w28	L=1	4.0
12	FEINSTEIN,MICHAEL	NC	2299		2299	w37	w29	w13	D11	L=1	D16	4.0
13	CUNNINGHAM,ROBIN	NC	2168		2175	w31	w42	L12	w35	L15	w34	4.0
14	HENSON,WILLIAM B	NC	2144		2153	w62	w64	L11	D16	D31	w35	4.0
15	MAGEE,TONY D	NC	2009		2077	w40	D28	w30	D33	w13	L=3	4.0
16	DEMERS,REX	NC	1958		2014	D66	w76	D28	D14	w36	D12	4.0
17	HARGROVE,WILLIAM	NC	1789		1816	w52	w25	D=6	w10	L=7	D24	4.0
18	WORLEY,CHRIS D	NC	1784		1800	w90	w50	D=2	L=6	w32	D20	4.0
19	GRIFFIN,DAVID M	NC	1777		1781	w26	w23	L=8	L25	w69	w46	4.0
20	RICHARDS,DAVID T	NC	1769		1762	w89	D57	L10	w73	w59	D18	4.0
21	GREENLEE,LEROY S.	NC	1728		1750	w71	L38	w69	w65	w46	L=6	4.0
22	MAHAFFEY,MARION E	SC	1724		1717	w51	L=8	w52	L44	w70	w45	4.0
23	NEAL,CHESTER W	NC	1722		1746	w27	L19	w84	w38	L=4	w53	4.0
24	LANE,JOHN E	NC	1667		1741	w84	w65	w38	D=8	L=2	D17	4.0
25	WILLIS,STEVEN C	NC	1647		1689	w58	L17	w53	w19	w45	L=4	4.0
26	WILLIAMS,THERESA	NC	1486		1572	L19	w27	L65	w84	w50	w44	4.0
27	PINNIX,CLAUDE B	NC	1172/11		1330	L23	L26	x==	w77	w51	w43	4.0
28	SMITH-SOTU,MARK I	NC	2153		2153	w63	D15	D16	w37	L11	D31	3.5
29	ERB,E DAVID	NC	2100		2104	w85	L12	D36	w30	L=9	w60	3.5
30	TOBIN,JAMES F	NC	2035		2043	w75	D11	L15	L29	w76	w41	3.5
31	CALLAWAY,JOSEPH E	NC	1911		1959	L13	D39	w42	w60	D14	D28	3.5
32	HARWELL,GEORGE	VA	1710		1726	w77	D56	w57	L=2	L18	w59	3.5
33	HARRIS,NEAL D	NC	2221		2199	w61	w81	D=1	D15	L=3	L=9	3.0
34	NEWMAN,TERRY W	NC	2146		2117	L64	w63	L=9	w62	w39	L13	3.0
35	CRUZ,ALFREDO	NC	1988		1999	L11	w75	w40	L13	w64	L14	3.0
36	THOMPSON,JAMES C	NC	1971		1986	L=1	w85	D29	w61	L16	D39	3.0
37	MAINGI,HAJESH	NC	1970		1968	L12	w62	w82	L28	L41	w66	3.0
38	LEE,JOHN B	NC	1891		1840	w48	w21	L24	L23	w54	L10	3.0
39	SLOAN,THOMAS R	NC	1875		1900	L=3	D31	w66	w42	L34	D36	3.0
40	COVINGTON,JR WILL	NC	1851		1860	L15	B==	L35	D76	D60	w63	3.0
41	STEWARD,ROGER A	NC	1825		1858	L81	L61	w85	w82	w37	L30	3.0
42	SCHMIDT,DAVID	NC	1773		1799	B==	L13	L31	L39	w62	w64	3.0
43	WILLIAMS,LARRY D.	NC	1691		1643	w70	L=2	L54	w79	w72	L27	3.0
44	LOESCH,TIM	NC	1624		1605	D73	D72	w78	w22	L=5	L26	3.0
45	BUAIZ,MICHAEL A	NC	1602		1625	w80	w67	w=4	L=7	L25	L22	3.0
46	PETRANICK,DAVID A	NC	1562		1577	L59	w73	w58	w67	L21	L19	3.0

47	GOLDBERG, RAFAEL	NC	1501	1493	L65	L84	H--	H--	W79	W69	3.0
48	FROHMAN, SIMON M	NC	1499	1487	L38	W71	L50	D78	D49	W70	3.0
49	DAVIS, KENNETH	NC	1489	1498	L--	W70	D59	L56	D48	W72	3.0
50	DAUGHERTY, JR CHAR	NC	1470	1490	W88	L18	W48	L--	L26	X--	3.0
51	MARTINAT, HENRY	NC	1468	1481	L22	W55	L--	W58	L27	W71	3.0
52	WRIGHT, LARRY	NC	1467	1436	L17	W77	L22	L53	X--	L55	3.0
53	YUN, STAN	NC	1417	1489	L--	W83	L25	W52	W67	L23	3.0
54	RUSKA, DAVID A	NC	1416	1454	L67	W60	W43	L--	L38	W73	3.0
55	YANDLE, JOHNNY	NC	1150	1167	L57	L51	H--	H--	X--	W52	3.0
56	LOMBARD, RALPH S	NC	1803	1800	W86	D32	L--	W49	F--	U--	2.5
57	MILLER, II DONALD	NC	1706	1653	W55	D20	L32	L59	W78	L58	2.5
58	LIPKIN, MICHAEL A	NC	1247	1313	L25	W89	L46	L51	D83	W57	2.5
59	HOLDEN, GARY	NC	0	1626	W46	L--	D49	W57	L20	L32	2.5
60	STUART, III BURTON	NC	2049	1988	D76	D82	D74	L31	D40	L29	2.0
61	NEWSOM, GARY D	NC	1958	1926	L33	W41	L--	L36	L66	W75	2.0
62	HAFT, ARTHUR J	NC	1950	1921	L14	L37	W75	L34	L42	W85	2.0
63	GOLDBERG, LAURENCE	NC	1910	1873	L28	L34	D76	D85	X--	L40	2.0
64	DULIN, CHARLES THO	NC	1893	1896	W34	L14	W81	L--	L35	L42	2.0
65	FRANCIS, JOSEPH A	NC	1860	1838	W47	L24	W26	L21	U--	U--	2.0
66	HORTON, ALFRED J	NC	1804	1813	D16	L--	L39	D75	W61	L37	2.0
67	WADFORD, JR A WILD	NC	1793	1731	W54	L45	W68	L46	L53	U--	2.0
68	WELCH, JOHN C	NC	1543	1478	X--	L--	L67	L70	L71	W79	2.0
69	SWAIM, SAMUEL M	NC	1443	1447	L--	W88	L21	W71	L19	L47	2.0
70	STEHLER, DONALD	NC	1256	1293	L43	L49	W83	W68	L22	L48	2.0
71	GOODMAN, DWIGHT C	NC	1220/6	1307	L21	L48	W86	L69	W68	L51	2.0
72	YANDLE, JOSEPH W	NC	1147	1170	D10	D44	H--	H--	L43	L49	2.0
73	JAEGER, WILLIAM A	NC	1047/3	1274	D44	L46	W88	L20	H--	L54	2.0
74	BAXTER, KEN J	NC	1931	1936	H--	H--	D60	U--	U--	U--	1.5
75	MOORE, ROBERT C	NC	1850	1825	L30	L35	L62	D66	W85	L61	1.5
76	DENNIS, RONALD L	NC	1803	1808	D60	L16	D63	D40	L30	U--	1.5
77	HORTON, HERBERT T	NC	1350	1322	L32	L52	D80	L27	B--	U--	1.5
78	MC LEUD, JERRY	NC	1312	1333	L--	W66	L44	D48	L57	F--	1.5
79	WHITEHEART, JOHN	NC	1094	1087	B--	L10	H--	L43	L47	L68	1.5
80	CHAPKO, JAMES	NC	0	1190	L45	L54	D77	X--	U--	U--	1.5
81	SHOPPELL, JR MARVI	NC	2083	2055	W41	L33	L64	U--	U--	U--	1.0
82	POZNANSKI, STEVE	NC	1798	1796	D--	D60	L37	L41	F--	U--	1.0
83	HOLMES, DANIEL P	NC	1576	1526	L--	L53	L70	D86	D58	U--	1.0
84	SLATON, JR JAMES W	SC	1336/2	1454	L24	W47	L23	L26	F--	U--	1.0
85	HERENDEEN, GARY J	NY	1895	1825	L29	L36	L41	D63	L75	L62	.5
86	ENGELSTAD, MARK L	NC	1476	1433	L56	L78	L71	D83	F--	U--	.5
87	COLLIER, DARYL T	NC	1845/14	1845	F--	U--	U--	U--	U--	U--	.0
88	RODRIGUEZ, OLIVER	NC	1593/15	1498	L50	L69	L73	F--	U--	U--	.0
89	JOHNSON, DENNIS W	NC	1464	1445	L20	L58	F--	U--	U--	U--	.0
90	GARCIA, JORGE	NC	1354/18	1356	L18	U--	U--	U--	U--	U--	.0

SCHOLARS CUP

	PLAYER	ST	PRE	POST	1	2	3	4	TOT
			RTNG	RTNG					
1	GOLDBERG, RAFAEL	NC	1493	1518	W14	W--	W--	W--	4.0
2	KAUFMANN, SCOTT HO	NC	1398	1422	W10	W--	W--	L--	3.0
3	CORDELL, BRANDON	NC	1248	1277	W18	W--	L--	W--	3.0
4	YANDLE, JOSEPH W	NC	1170	1230	W12	W13	L--	W--	3.0
5	YANDLE, JOHNNY	NC	1167	1198	W17	L--	W11	W--	3.0
6	SHARER, GILLIAN	NC	1082	1116	W11	W14	D13	L--	2.5
7	KAUFMANN, CRAIG	NC	1206/12	1212	W15	L--	W10	L--	2.0
8	CORDELL, BRYAN	NC	1131	1140	W16	L--	W12	L--	2.0
9	SUMNER, CHARLES T	NC	954	977	L13	W16	D17	D14	2.0
10	STEPP, DEREK	NC	891	949	L--	W15	L--	W13	2.0
11	STEPHENS, JONATHAN	NC	0	1117	L--	W18	L--	W17	2.0
12	SMITH, MARSHALL	NC	0	1148	L--	W17	L--	W16	2.0
13	DAVENPORT, BENJAMI	NC	1445	1402	W--	L--	D--	L10	1.5
14	SCHWARTZ, JACOB BE	NC	1050/14	1061	L--	L--	W15	D--	1.5
15	VIGELAND, KAREN	NC	0	926	L--	L10	L14	W18	1.0
16	HALL, KYLE	NC	0	852	L--	L--	W18	L12	1.0
17	HALL, BECCA	NC	0	776	L--	L12	D--	L11	.5
18	SCHWARTZ, DAVID LE	NC	703/13	697	L--	L11	L16	L15	.0

The 12th Annual L.P.O. held July 26-28 at the Holiday Inn, N., in Winston-Salem attracted a hoard of Experts and Masters as well as Titled Players from all over the country all vying for a slice of the \$10,000 pie! IM Eugene B. Meyer from Washington, D.C. scored a perfect 5-0 taking clear first and \$1,000. Tied for second with 4½-½ was IM Vincent McCambridge, who is now a resident of Charlotte, N.C. and a salaried instructor for the CMSCA. Vince picked up \$400. Other Open Section N.C. prize winners were: =2nd 2100 Daniel Liu of Raleigh, Terry Newman of Rocky Mount, "Gentleman" James A. Watson of Rocky Mount, each scoring 3-2 and winning \$57.14. 1st 2000 Melvin Alsherry of Jacksonville with 3½-1½ winning \$400. =1st 1999 & Below Frank Necci of Wilson and David Haimes of High Point with 3-2 winning \$266.66 each.

The 111 player Amateur Section produced two perfect scores by Cary, N.C.'s John E. Bunch and Samir W. Mahfoud of Murray, Ky. each winning \$400. 1st 1700 was Daryl Collier of Angier with 4-1 winning \$300. =2nd 1700 was David F. Meador of Southern Pines scoring 3½-1½ and winning \$60. =2nd 1600 Leroy S. Greenlee of Elkin and Chester W. Neal of Roanoke Rapids each scoring 3½-1½ and winning \$100. =2nd 1599 & Below Albert P. Carlson of Carrboro with 3-2 winning \$150.

The 68 player Novice Section also produced two perfect scores by Winston-Salem's Michael Long and Dolf M. Davis of Lexington, Va each winning \$275. =3rd were Elliott Schwartz of N. Myrtle Beach, S.C. and Douglas M. Newsome of Raleigh each scoring 4-1 and winning \$91.66. =2nd 1300 were Edwin Chamberlain of Durham and Leonard T. Holloway of Rocky Mount each with 4-1 winning \$91.66. =1st 1200 were Paul Lucas of Charlotte and Joe Duncan of Winston-Salem each with 3-2 winning \$125. =1st 1199 & Below were Jonathan Wright of Salisbury and John Whiteheart of Shelby each with 2-3 winning \$62.50. 1st Unrated was Henry Minchaca of Winston-Salem with 4½-½ winning \$300. 2nd Unrated was Marvin Satterwhite of Durham with 4-1 winning \$200.

The tournament was directed by Harry Sabine with the assistance of Robert Singletary, both NTD's. Very special thanks to Dr. Alan Lipkin who now resides in Harrogate, Tennessee yet continues to organize the "richest tournament in Southern chess history" for N.C.

Other Tournament Results:

Not-For-Profit IV, Sep 14, 85, Section 1, Neal Harris, 3-0, \$50. =2nd were Klaus Pohl, Greg Hall, and Randy Church with 2-1 winning \$7. (Church, rated 1514, defeated two players rated 1700+ before losing to Hall in the last round. He is a student at South Caldwell in Hudson and current Junior High School Co-champion). Neal Harris defeated SC Master Klaus Pohl in the ultimate round. Section II, Ron Nalley, 3-0, \$40. + Trophy. (Ron Nalley is a new member of the NCCA & USCF and a Junior in High School). =2nd were John Grant, Herbert Horton, & David Propst each with 2-1 winning \$4. Unrated Section, Becky Bales, 4-0, Trophy. 2nd Steve Penland 3-1. =3rd were Bobby Barnett, Charlie Cole, & Chris Helton with 2-2. John Thomas directed.

Royall Gamer #3, Beaufort, =1st Jeff Walsh & Ibrahim Whit with 2-0, Walsh winning the trophy on tie-breaks. Each won \$14.

Downeasterner # 14, Morehead City, =1st Mat Noble & James Thompson, 3½-½. Noble won trophy on tie-break. Each won \$42. =3rd were John Smith, Don Miller & Gurney Freeman. Each won \$8.

2nd Annual Beaufort Open, 1st Mat Noble (repeating last years) 1st Under 1800 Michael Buaiz and John Smith. Buaiz won on tie-break. 1st under 1400 was Jill Stuart (in her first tournament).

Panjandrum I, Charlotte, Ended 8-21-85, 41 players, Section 1, John B. Lee, 3½-1½. =2nd James F. Tobin & Arthur J. Haft with 3-2. Section II, Vinay Mutha, 4½-½. 2nd John Welch with 4-1. 3rd was Jim Wilson with 3½-1½.

34th Annual North Carolina Championship: cont.

At one point, it was not completely certain that the tournament would take place. The out-of-state master so insisted on playing in the big-money tournament that he threatened to have his attorney plead for an injunction, halting the event if, for some reason, he did not play. At 11:30pm, the evening before the event, a past president solved the crisis by citing the NCCA's constitutional provision (currently under review) that allowed out-of-staters to compete.

The event, otherwise, was a spectacular success. The elegant hotel ballroom, with four fifteen-foot chandeliers, was hailed by everyone as being the most perfect place to play. NM Neal Harris and his group commented on how reasonable the luxurious rooms were. And the whole hotel staff (save for a testy, slow witted maitre'd) were super, tending constantly to our needs.

A featured guest at this year's championship was GM Yasser Seirawan, World Title Contender. "Yaz" gave simos, lectured, and otherwise spread good cheer. The man is ineffably likeable. When introduced to him, this writer was taken aback by his disarming manner, not the least of which were an easy sincere smile and warm handshake. Watch out, Capal

Other prize winners included Robert Spurrier of High Point who won the 2nd Place trophy, \$150, and a seat to the 1985 N.C. Invitational for his excellent result of 4½-1½. Ben Henson of Carrboro and Robin Cunningham of Raleigh each won \$75 for Top 2100 scoring 4-2. Top 2000 prize was shared by Tony Magee of Greensboro and Rex Demers of Kinghtdale each winning \$75 with 4-2 scores. While the Top 1900 money was claimed by Bob Spurrier, the Top 1800 prize of \$150 was split four ways with Tom Sloan of Greensboro, David Schmidt of Raleigh, Roger Steward of Raleigh, and Billy Covington scoring 3-3.

Amateur Section

With Kevin Kirby of Charlotte winning 1st Place prize of \$350. plus a \$200 bonus provided by the Charlotte Observer, the 2nd Place money was split by 4 other Charlotte players, Vinay Mutha, John Freeman, Tom Powell, and Jim Dutton each scoring 5-1. Mutha claimed the 1500 money of \$100 leaving the others \$50 each. Top 1600 was Terry Bridges of Lincolnton with 4½-1½, Top 1400 was Theresa Williams with 4-2, Top 1300 was Stan Yun of Asheville with 3-3, and Top 1200 was Claude Pennix scoring 4-2, each winning \$100. The Top 1500 plaque was awarded to Angelo Fleming of High Point.

The tournament was organized in full by NCCA President Leland L. Fuerstman. NTD Robert N. Singletary directed.

UPCOMING TOURNAMENTS

Note: All tournaments listed in the Gambit must be submitted for publication at least 90 days in advance and must require NCCA membership. Tournaments listed with 8 man sections automatically qualify for NCCA Grand Prix points.

October 19

Not-For-Profit V - 3-SS, 40/80, 30/1. SD/30. South Caldwell High School, 321 S., Hudson 28638. EF: \$6. if received by 10/18, \$8. at site. NCCA Memb. Req. \$\$ (b/8) \$50 to 1st of Trophy + \$40. Reg: 9-9:45am, Rds: 10-2-6. Ent: John E. Thomas, 115 Joyceton Ch. Rd., Lenoir 28645 (704-728-6945) NS NC

October 19

NCSU Phi Kappa Blanca VIII - 3-SS, 40/90, NCSU, Student Union (Cates Ave. at Morrill Rd.), Raleigh 27650. EF: \$6. if received by 10/15, \$7. at site; NCSU Students \$6. NCCA Memb. Req. \$\$ (b/8) 30 to 1st. Reg: 9-9:40am., Rds: 10-2-6. Ent: Robert N. Singletary, NTD, 3712 Dade St., Raleigh 27612 (919-782-3809. NS NC

UPCOMING TOURNAMENTS

November 2

Ram XXXV - 3-SS, 40/90, SD/30, UNC-CH, Student Union, (Hwy. 54 Bus.), Chapel Hill 27514. EF: \$5. if received by 10/28, \$6. at site. NCCA Memb. Req. \$\$ (b/8) \$26 to 1st. Reg: 9-9:40 am., Rds: 10-2-6. Ent: Robert N. Singletary, NTD, 3712 Dade St., Raleigh 27612 (919-782-3809). NS NC

November 6, 13, 20

Knight Rider IV - 3-SS, 40/75, 35/60. (one Rd. per Wednesday evening), Arts Council of Rowan County, 314 N. Ellis St., Salisbury 28144. EF: \$1. Free Entry to 1st. Reg: 6:45pm. Rd: 7 Ent: at site. Info: Larry Wright (704-633-3881).

November 6, 13, 20, 27, December 4

Panjandrum IV - 5-SS, (one Rd. per Wednesday evening). Shoney's, Woodlawn Rd. @ South Blvd. (Off I-77), Charlotte 28210. In 2 Sections: Championship, TL 20/1, 20/1. Open to 1800 and above. Amateur, TL 30/1, 30/1. Below 1800. Both EF: \$2. per round. Free entry to 1st each section. Reg: 7:00pm, Rd: 8:00pm, Adjournment: 11:15pm. Ent: Site LS Leland Fuerstman

November 9

Downeasterner #15 - 4-SS, 60/90, The Royale Game Shoppe, Ole Towne Centre, 120 Turner St., Beaufort 28516. EF: \$12. if received by 10/6, \$15. at site; free entry to highest rated. \$\$ (192 b/16): 96-64-32; trophy to 1st. Reg: 9:30-9:50am. Rds: 10-1-4-7. Ent: Royale Game Shoppe, P.O. Box 888, Beaufort 28516. Info: Don Miller (919-728-3342) NS NC

November 16

Hudson

Not-For-Profit VI - Details same as N-F-P V, Early EF by 11/15

November 16

Raleigh

NCSU Phi Kappa Blanca IX - Details same as P.K.B. VIII, Early EF by 11/12

November 30 - December 1

Crossville, TN

Crossville Scholastics, Crossville, Tenn. (Info in CL)

December 4, 11, 18

Salisbury

Knight Riders V - Details same as K.R. IV, Entries at site.

December 6, 13, 20, 27

Charlotte

Jorge Arroba Classic - 4-SS, 30/1. (one Rd. per Friday evening) YMCA, 400 E. Morehead St., Charlotte 28202 EF: \$4 if received by 12/1, \$5 at site. \$\$ 40%-10%-5%. Reg: 7-7:30pm Rd: 8:30pm. Ent: Sam Swaim, P.O. Box 341, Harrisburg 28075 LS

December 7

Beaufort

2nd Annual Royall Game Shoppe Open - 5-SS, 60/1. The Royall Game Shoppe, Ole Towne Centre, 120 Turner St., Beaufort 28516 EF: \$16 if received by 12/4, \$20 at site. Under 18 \$16. \$\$ (480 b/30): 192-144-96-48; Trophy to 1st. Reg: 9:30-9:50am, Rds: 10-12-2-4-6. Ent: The Royale Game Shoppe, P.O. Box 888, Beaufort 28516 Info: Don Miller (919-728-3342) NS NC

December 11

Charlotte

Charlotte Chess Club Speed Championship - Double 5-SS (Play 1 White & 1 Black with each opponent) Shoney's, Woodlawn Rd. at South Blvd., Charlotte 28210 EF: \$5. In 2 Sections: \$\$ 50%-20% each section. TL 5 minutes each. (Touch move). Ent: At site. Reg: 7:00-7:45pm Rds at 8:00pm. Bring Equipment.

December 27-29

Crossville, TN

Fairfield Glade Open, Crossville, Tenn. (Info in CL)

CHESS CLUBS ***** CHESS CLUBS ***** CHESS CLUBS *****CHESS CLUBS

TUESDAY:

Winston-Salem Chess Club, 7:00 til. South Fork's "Our House", Country Club Rd., Winston-Salem. Info: Allen Cooley, 1200 Red Oak Rd., W.S. 27106 Bring Equipment.

WEDNESDAY:

Asheville Chess Club, 7:30 pm til. North Asheville Recreation Center, (off Merrimon Ave. at N. Larchmont), Asheville. Info: Bill Adickes 704-253-4491 or Bob Eoff 704-255-8739

Boone Chess Club, 7:00pm til. Plaza Motel, Boone. Bring Equipment. Info: Ashok Patel, 704-264-2457

Cape Fear Chess Club, 7-10:00pm, UNC-Wilmington, Student Union Bldg., Wilmington. Bring equipment. Info: Ulf Helsten ?

Charlotte Chess Club, 7-11:15pm, Shoney's, Woodlawn Rd. @ South Blvd. (Woodlawn Rd. off I-77). WEEKLY TOURNAMENT COMPETITION. EF: \$2. Bring equipment. Info: Leland Fuerstman, 704-523-2181.

Greensboro Chess Club, 7-10:00pm, Folk Recreation Center, 3918 Clifton Rd., Greensboro. Info: Richard Ward, 919-852-2854 Bring Equipment.

Knight Riders Chess Club, 6:30pm til, Arts Council of Rowan County, 314 N. Ellis St., Salisbury 28144. Info: Fred Quick, 704-636-9265 or 633-3881. Bring equipment.

Morehead City/Beaufort Chess Club, 7:00pm til. The Royale Game Shoppe, Ole Towne Centre, 120 Turner St., Beaufort. Shoppe open daily for chess! Donald Miller, 919-728-3342

FRIDAY:

Charlotte "YMCA" Chess Club, 7:30-11pm. YMCA, 400 E. Morehead St. Charlotte. WEEKLY TOURNAMENT COMPETITION. Bring equipment. Info: Sam Swaim, 704-455-5274.

Raleigh Chess Club, 7:30-11:30pm. Kiwanis Recreation Center, 2525 Noble Rd. Raleigh. 25¢ per meeting. Ed Bremson 919-834-0865

SATURDAY:

Yadkin Valley Chess Club, 9:00am-5:00pm. Oak Grove Community Center, Oak Grove Rd., Elkin. Info: Steve Greenlee 919-835-6389

**CAROLINA
GAMBIT**

C/O Leland L. Fuerstman
320 Seneca Place
Charlotte, N.C.
28210



Non-Profit Org.
U.S. Postage Paid
Charlotte, N.C.
Permit No. 59