

# CAROLINA GAMBIT

HAPPY  
HOLIDAYS!

Vol XXXIV

\$1.00

No. 6

NORTH CAROLINA CHESS ASSOCIATION

Nov-Dec 1985

## \*NCCA OFFICERS\*

PRESIDENT/Leland L. Fuerstman/320 Seneca Pl/Charlotte/ 28210  
VICE-PRES/Robert N. Singletary/3712 Dade St/Raleigh/ 27612  
SEC-TREAS/Kenneth J. Baxter/7111 Terrace Dr/Charlotte/ 28211  
EDITOR-PT/Leland L. Fuerstman/320 Seneca Pl/Charlotte/ 28210

## NCCA POLICY

Annual dues are \$6.00 for adults and \$4.00 for juniors under 18. (After January 1, 1986, dues will be \$10.00 for adults and \$8.00 for juniors, \$3.00 for participating juniors). Membership is open to all, however, only N.C. residents may vote, hold office, or compete in the N.C. Invitational Championship. Each member is entitled to play in NCCA sponsored events and will receive the Carolina Gambit published six times per year. Games, articles, tournament reports, and other materials for the Gambit are welcome and necessary. All dues and questions concerning membership shall be submitted to Ken Baxter. All tournament results in the form of a copy of the official USCF printout will be submitted to Robert Singletary for N.C. Grand Prix calculation and official record. All other contributions such as synopsis of event, section winners, interesting incidents, upsets, and just games will be sent to Leland Fuerstman. The next issue will be published around February 15.

## INTERNATIONAL NEWS:

### Kasparov Overthrows Karpov For FIDE Title

Moscow--GM Garry Kasparov from Baku, USSR wrested the FIDE crown from Anatoly Karpov on November 9, 1985 with a stunning victory in the last game of their 14-month struggle, becoming at 22, the youngest champion in the history of the game.

Caught in an unexpected and clever trap, GM Karpov, 34 years old, resigned the game and his title after 43 moves, making way for a maverick player who has electrified the chess world in his meteoric rise to the top. Under the arrangements of the match, Karpov is entitled to a rematch within 6 months, but chess officials said one was not yet certain. (Final game on p.6)

### Alburt Wins U.S. Championship, Again

Denver--GM Lev Alburt of New York City proved that last years result was no fluke as he led from start to finish scoring 9½-3½ in the 1985 U.S. Invitational Championship in October. IM Joel Benjamin, also of New York, finished clear second scoring 9-4 earning his 2nd GM Norm!

Though North Carolina's IM Vincent McCambridge experienced some difficulties against the nation's finest, he was able to defeat the U.S. Champion in the 10th round. (See game on Page 9)

\*\*\*FLASH\*\*\* Feinstein Wins N.C. Invitational - Story on p.3 -



## NORTH CAROLINA CHESS ASSOCIATION

### MESSAGE FROM THE CHAIRMAN OF THE BOARD

By Leland L. Fuerstman

With this year coming to a close, the "state of the state" is excellent. In fact, 1985 may have been the most prosperous in the 34 year history of this organization.

The annual balance sheet, prepared by NCCA Secretary/Treasurer and Certified Public Accountant Ken J. Baxter indicates a healthy profile soon to become healthier. Administratively, we have accomplished the long overdue task of revising our constitution. This new constitution will qualify the NCCA for a special IRS 501 C-3 status which will allow tax deductible donations as well as reduce our postage rate to less than 6¢ per piece. NCCA Attorney A. Wilder Wadford is solely responsible for drafting the new document and sending it forward to the State Corporation Commission for acceptance. (A few years ago, a past NCCA President authorized a \$500. expenditure which accomplished little more than a bulk mailing rate status. Though Mr. Wadford spent many hours cross-referencing, preparing, and conferring, the NCCA was billed only for initial corporate fees and direct expenses for a total of \$120!) Thank you, Wilder.

If sheer competition is what you are looking for, over the past year the Gambit has advertised more than 70! different NCCA sanctioned events. Dr. Al Lipkin's \$10,000 LPO was once again a huge success attracting some of the countries finest talents. Next on the list money-wise was the 1985 N.C. Championship sponsored by the Charlotte Chess Club. However, if one judges success by sheer numbers, the 1985 National Elementary Scholastic Championship sponsored by the CMSCA and Larry Goldberg was easily North Carolina's greatest tournament success ever with it's 472 participants! (The CMSCA has agreed to sponsor that tournament again this year!).

Two more scholastic events followed with 90 players at the N.C. Elementary Championship organized by Nancy Seltsmann and Olga Simpson of Raleigh, and 87 entries into the Middle and High School Championships sponsored by Joe Stegall's Marshville group.

But, what about the other 70+ tournaments? They result of the efforts of Richard Ward, Robert Singletary, Allen Cooley, Don Miller, John Thomas, Rajesh Maingi, Ed Bremson, Steve Greenlee, Larry Wright, Sam Swaim, Jeff Walsh, and probably a few others to whom I apologize for forgetting. NCCA members should go out of their way to personally thank the above mentioned people for their service to North Carolina chess.

As for chess exhibitions, the NCCA rivalled all with two major events sponsored by the Charlotte Chess Club: The month of May saw U.S. Champion GM Lev Alburt give two simultaneous exhibitions, and only 5 months later, the U.S.'s strongest international competitor, GM Yasser Seirawan provided two more.

Finally, the Gambit has been painstakingly upgraded to provide timely tournament announcements, over 80 games of N.C. players, accurate lists, and interesting tournament reports all for the education and pleasure of our readers. With the addition of Missouri defector NM Rich Jackson as Gambit Games Editor, it is anticipated that more members will submit games for publication in 1986.

Happy Holidays to All!!

Feinstein Wins N.C. Invitational Crown; Next Year's Format to Change

Chapel Hill--NM Michael Feinstein, a dental student at Duke University, successfully operated on elite field of Masters and Experts scoring 3½-1½ to win the 1985 North Carolina Invitational Championship held November 2-3 at the UNC Student Union Building. For his efforts, Feinstein won \$60....(Who needs a dental practice when he can make money like that??)

Clear 2nd with 3-2 was NM Lee Taylor of Carrboro who garnered \$30. Tied for 3rd-5th were NM Greg Samsa of Chapel Hill, Robert Spurrier of High Point, and Robin Cunningham of Chapel Hill each with 2½-2½. North Carolina State Champion Dana Nance of Durham finished last with 1-4. The event was directed, as usual, by NTD Robert N. Singletary.

Unfortunately, a \$90. prize fund fails to provide an incentive for a qualifier who must be prepared for the expenses of the weekend journey. Furthermore, North Carolina's finest deserve better. Therefore, next years Invitational will allow the entry of any North Carolina player with a current rating of 2000 or above! This new system will not only provide an incentive for Class A Players to reach the Expert level (as in Virginia), but will, from the new entry fees, create a legitimate prize fund which will probably be shared by the top players, anyway. (I'm looking forward to it! LLP)

NCCA Life Membership Deadline Extended;  
You Could Save Over \$100!

The NCCA Executive Committee has decided to extend the deadline for the purchase of an NCCA Life Membership for \$120. until January 31, 1986. After Jan. 1, the price will be \$200.

The purchase of an NCCA Life Membership entitles you to free entry into the next State Championship. That adds up to over \$100. in savings if you act now!

All funds received for Life Membership are deposited into a special NCCA Savings Account which will help insure the future of our growing organization.

The following is a list of all NCCA Life Members:

William Addickes

Paul Carriger

Grove Cummings

\*Dr. William Foster

\*New

Dr. Al Lipkin

Larry Matthews

M.J. McChesney

Arthur Menius

Donald Miller

Lee Taylor

Bill Wall

\*A. Wilder Wadford

\*John Welch

---

NEWSBREAK:

USSR and USA to Play Team Match in Early 1986!

The Gambit has learned from reliable sources that a team from the USSR, including the new "FIDE Champion", will compete against a team of the USA's strongest Grandmasters in February in Atlantic City, New Jersey. (You read it first in the Gambit!)

Major Manhunt for New "Gambit" Editor  
Unidentified, and Still at Large

The NCCA still continues to search for a new "Gambit" Editor. Candidates should have some journalism experience and enough "free" time to accomplish the task. Anyone interested, please contact me at 704-523-2181.

1986 NCCA POSTAL CHESS CHAMPIONSHIP TO BEGIN IN JANUARY; USCF RATED  
By Donald V. Miller, II -Tournament Secretary-

After many months of communication and planning, the NCCA will officially sponsor the 1986 Postal Chess Championship according to the following rules:

1) The NCCA Postal Chess Championship is open to North Carolina residents who are, and remain USCF and NCCA members for the duration of the event.

2) Groups of seven (7) players of varying strengths will compete in the two stage event (preliminaries & finals) playing six (6) games in each round; three white & three black.

3) All players who score five (5) or more points will advance to the finals. (If necessary, players with the next highest score will fill remaining groups; highest postal rating taking precedence).

4) Prizes will be awarded according to entries. (Complete list will be published in Jan-Feb GAMBIT).

5) This rated tournament will be conducted according to the most recent version of the USCF Postal Rules, however, upon entering, each contestant agrees that the decision of the NCCA shall be final in all matters regarding the conduct of the tournament including acceptance and classification of entries, the adjudication of games, the distribution of prizes, and all other interpretations of rules.

6) An entry fee of Ten Dollars (\$10.) must be postmarked before March 31, 1986 and mailed to: NCCA, C/O Donald V. Miller, II, P.O. Box 888, Beaufort, N.C. 28516 (Pairings processed Jan 2, 1986)

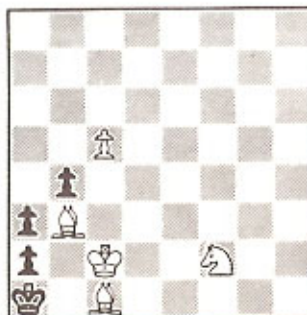
7) A player may enter up to five (5) times, paying \$10 for each, provided he applies early enough to allow placement.

---

The 1985-86 Grand Prix will enjoy the same exciting format as this year - for every tournament advertised in the Gambit players are awarded One Grand Prix point for each Win, and One Bonus Point per round for being 1st in his 8 man section. Draws earn no points. For every additional 8 players in a section, the clear winner will earn One additional bonus point per round. Players who tie for first will divide bonus points equally. A four round tournament earns four bonus points, a five rounder, five, etc. (i.e. a 3-round, 16 man section would qualify for 6 bonus points). Players are encouraged to keep up with their own Grand Prix total for further verification. Remember, Directors, it is vitally important that you promptly send a copy of the USCF Printout of results to Robert N. Singletary.

---

\*Composition of the Year\*  
White to play; Mate in 5  
By: Christopher D Worley



## CMSCA CLEANS UP CROSSVILLE!

By Rich Jackson

The CMSCA recently took a team of 32 young chessplayers to the 1985 Crossville Scholastics. Every trophy in sight was a potential target as the youngsters proceeded to mow down the competition right and left. When the dust settled, a number of trophies had a new home in Charlotte.

The most outstanding individual result was the first place finish by David Fox in the Junior High Novice division. His perfect 5-0 score was in jeopardy throughout as Chad Johnson, also of Charlotte, trailed him and finished in second with a 4 1/2-1/2 score. McClintock Junior High ran away with the team title in the Novice division and First Ward Elementary School tied for first place in the Open.

A fine performance was also turned in by Michael Klein, 6, who was participating in his first tournament. This young phenom went 4-1 in the primary section and may become the highest rated six-year old in the country. Congratulations to all of those who did well and which we don't have room to mention. The work of the CMSCA coaches paid off in the Crossville tournament. Hats off to Larry Goldberg, IM Vincent McCambridge and NM Rich Jackson. The CMSCA wants to especially thank those parents who contributed their time and made the whole thing possible.

Borrowed from:  
ESSAY by William Safire  
New York Times, 10-24-85

## "Karpov at the Board"

There was ease in Karpov's manner,  
As he stepped into his place,  
There was pride in Karpov's bearing,  
And a smile on Karpov's face;  
And when, responding to the cheers,  
His opponent he ignored,  
Grandmasters of the chess world knew,  
'Twas Karpov at the board.

"Fraud!" cried the maddened thousands,  
And the echo answered "Fraud!"  
But a scornful look from Karpov,  
And the audience was awed;  
They saw his face grow stern and cold,  
They watched his muscles cord,  
When Russia lost to Fischer,  
There was no Karpov at the board.

Oh, somewhere in this snowy land  
The sun is shining bright,  
The band plays Shostakovich,  
Apparatchik hearts are light;  
And somewhere children frolic  
And Gorbachev's smile is kind,  
But there is no joy in Moscow -  
Mighty Karpov has resigned.

It was with a great deal of pleasure that I accepted an offer by Leland Fuerstman to become Games Editor for the Carolina Gambit. PLEASE mail me some of your games as I always need extra for potential publication! Rich Jackson

\*\*\*\*\*GAMES OF N.C. PLAYERS\*\*\*\*\*

Edited by National Master

Rich Jackson

SEND CONTRIBUTIONS TO:

3031 B. Clemson Ave.

Charlotte, N.C. 28205

0070 KINGS INDIAN DEFENSE YMCA  
Simul 11-9-85 IM McCambridge-NM  
Jackson 1 d4 Nf6 2 c4 g6 3 Nc3  
Bg7 4 Nf3 00 5 Bg5 h6 6 Bh4  
d6 7 e3 Nbd7 8 Qc2(A key move.  
White could castle on either  
wing. Black must now wait to  
see which one that might be.) c6  
9 Be2 a6 10 00 g5 11 Bg3 Re (11  
Rad Nh5 13 Ng5! (No! the fun  
really starts. This game is a  
good example of a strong attack  
against a good defense and that  
is why it has been included.)  
Ng3 14 Qh7+ Kf8 15 fg hg 16  
Rf7+! (The only way to continue  
the attack.) Kf7 17 Bh5+ Kf8 18  
Ne4 Nf6 19 Rf1 Be6 20 Ng5 Qd7 21  
h3 Bc4 22 Bg4 Bf1! 23 Be6! Reb!  
24 Qg6 Qe8 25 Bf7 Bc4!!(The  
winning move and the only  
defense to Ne6+.) 26 Be8 Re 27 h4  
e5 28 b3 Bd5 29 e4 Ne4 30 Ne4  
Be4 31 Qe4 ed 32 Qf4+ Kg8 33 h5  
Re6 34 g4 (White realizes he is  
crunched so he tries one last  
cheapo even though he saw the  
refutation coming his way.) Re1+  
35 Kf2(35 Kh2 Be5)Rf8 0-1

0071 SCHEVENINGEN SICILIAN  
Moscow, 24th Game 11-9-85 Karpov  
Kasparov 1 e4 c5 2 Nf3 d6 3 d4  
cd 4 Nd4 Nf6 5 Nc3 a6 6 Be2  
e6(This move order is designed  
to avoid the dangerous Keres  
Attack which could occur after 5  
Kh1 Qc7 10 a4 Nc6 11 Be3 Re8  
(Interestingly enough, Kasparov  
advocates the move 11 ... Rd8  
in his manuscript on the  
Scheveningen Sicilian.) 12 Bf3  
Rb8 13 Qd2(Kasparov makes a  
recommendation of 13 Qe1 in his  
work. Karpov was obviously  
acquainted with this and wisely  
sidesteps this.) Bd7 14 Nb3 b6 15  
g4!?(With his title on the line  
and in a must win situation,  
Karpov goes for it. This is a  
departure from the move 15 Bf2,  
used by Karpov in Game 18,

which goes nowhere.) Bc8 16 g5  
Nd7 17 Qf2 Bf8 18 Bg2 Bb7 19 Rad  
g6 20 Bc1 (This seems  
cumbersome and slow. However,  
it is difficult to find a  
quicker course which is not  
riskier.) Rac 21 Rd3 Nb4 22 Rh3  
Bg7 23 Be3(GM Robert Byrne  
suggested the possible  
alternative of 23 f5!? ef 24 ef  
Bg2+ 25 Kg2 with the threat of  
26 Qh4. It is certainly a more  
lively approach than the one  
that Karpov choose.) Re7(This  
helps to defend the second rank  
and you will find that this move  
is generally a strong defensive  
possibility for black in  
Sicilians.) 24 Kg1 Rce 25 Rd  
f5!(WOW! After playing  
defensively for 24 moves,  
Kasparov finally decides to  
strike in typical "Kasparovian"  
activity for his pieces. This  
pawn sacrifice is the start of  
the end for Karpov.) 26 gf Nf6  
27 Rg3 Rf7 28 Bb6 Qb8 29 Be3 Nh5  
30 Rg4 Nf6 (If 31 Rg3 Nh5.  
Kasparov would have won the  
match with a 12 1/2 - 11 1/2  
score if this game had ended in  
a draw so he rightly tried to  
induce Karpov to repeat moves.  
Karpov refuses to do this of  
course, but with each move he  
sees his title slipping away.)  
31 Rh4 g5! (This scintillating  
shot signals that it is black  
who is doing the "king hunt"  
rather than white. This is  
typical Kasparov and it is clear  
that the end is near.) 32 fg Ng4  
33 Qd2 Ne3 34 Qe3 Nc2 35 Qb6?  
(Throwing gasoline on the fire.  
Perhaps Karpov could have held  
with 35 Qe2, but this would not  
put him any closer to the  
victory which he so desperately  
needed to save the  
title.) Ba8 36 Rd6 (If 36 Qb8

Rb 37 Rd2 Ne3 38 Nd4 Bd4 39 Rd4 and now Rb2 is lethal.) Rb7 37 Qa6 Rb3 38 Re6 Rb2 39 Qc4 Kh8 40 e5 Qa7+ 41 Kh1 Bg2+ 42 Kg2 Nd4+ 0-1 The rematch, which starts in February, should be another exciting match and I anticipate that Karpov will come out slugging once again. Kasparov is now the champion and it will be interesting to see if the Russian Chess Federation will take his complaints into consideration when designing the match conditions. Who will win? I think it is to close too call.

0072 QUEEN'S INDIAN DEFENSE 1985 NC Open Championships A. Cruz(2017) Dulin(1896) 1 d4 e6 2 c4 Nf6 3 Nf3 b6 4 g3 Bb7 5 Bg2 Be7 6 Nc3 Ne4 7 00 00 8 Qc2 Nc3 9 Qc3 f5 10 Rd Bf6 11 b4 d6 12 Bb2 Nd7 13 Qb3 Qe8 14 Rac Qf7 15 Rd2 Rfe 16 d5 e5 17 h4 h6 18 Bh3! g6 19 h5! Be7 20 Qc2 e4 21 Nd4 e3 22 hg Qg6 23 Bf5 Qg5 24 Be6+ Kf8 25 Bd7! (Black is now doomed after 25 ... ed 26 Ne6+ so he gives up the ghost.) 1-0

0073 KING'S GAMBIT ACCEPTED 1985 NC Open Championship Petranick(1577) Lipkin(1313) 1 e4 e5 2 f4 ef 3 Nf3 g5 4 Bc4 Bg7 5 h4 h6 6 d4 d6 7 c3 Nc6 8 Qb3 Qe7 9 00 Nf6 10 hg hg 11 Ng5 Ne4 12 Ne4 Qe4 13 Rf4 Qh7 14 Bf7+ Kd8 15 Kf2 Rf8 16 Rf3 Bd4+? 17 cd Nd4 18 Bg5+ Kd7 19 Qa4+ Nc6?? 20 Qg4 + 0-1

#### 0074 KING'S INDIAN DEFENSE

1985 NC Open Championship G. Herendeen(1848) D. Erb(2130) 1 c4 Nf6 2 Nc3 e5 3 Nf3 d6 4 d4 Nbd7 5 g3 g6 6 Bg2 Bg7 7 00 00 8 e4 c6 9 b3 Re8 10 Ba3?! Qa5! 11 Bb2 Nf8 12 de de 13 Qc2 Be6 14 Ne5?! Qe5 15 Nd5 Qb2! 16 Qb2 Ne4?! (Nd5!) 17 Qc2? (Ne7+ and Qa3) cd 18 Rad Nc3 19 Rd2 Bf5 20 Qc1 dc 21 Re cb 22 ab Rac! 23 Re8 Ne2+ 24 Kf1? Ng3+ 25 hg Rcl+ 26 Ke2 b6 27 Ra8 Bc3 28 Rdd8? Rel+ 29 Kf3 Be4+ 30 Kg4 h5+ 31 Kf4 Be5+ 32 Ke5? Ba8+ 0-1 (Notes by Erb)

0075 TAIMANOV SICLIAN 1985 NC Invitational Champ. D. Nance(2144) G. Samsa(2267) 1 e4 c5 2 Nf3 e6 3 d4 cd 4 Nd4 Nc6 5 Nb5 d6 6 c4 (This variation has been virtually discredited by the Karpov- Kasparov match; however, I think White can still play it if he develops his Knights at c3 and d2 rather than c3 and a3. [Game's Editor: Mr. Nance is referring to the 18th Game which continued Nf6 7 N/1c3 a6 8 Na3 d5! Bam!!!] a6 7 N/5c3 Nf6 8 Be2 Be7 (Note that black cannot play 8 ... d5? a la Kasparov because of 9 ed ed 10 Nd5 Nd5 11 cd Nb4 12 Nc3 Bf5 13 00 Nc2!? 14 Bd3! Did Greg avoid this because he saw all of this, or was he afraid of a prepared variation, or was he afraid of Kasparov's innovation in the other main line?) 9 00 00 10 Be3 b6 11 Nd2 (+= Gufeld-Hort, Dortmund 1983) Bb7 12 Rc Nd7 13 Bd3 Bf6 14 Bb1 Rc 15 b3 Ne5?! (15 ... Bd4 was probably better.) 16 f4 Ng6 17 Nf3 Qc7 18 Nd4! Qb8 19 f5! ef 20 Nf5 Be5 21 Nd5 Rce 22 h4 Bd5 23 ed Qd8 24 Qd3! h5 (Not 24 ... Nh4? 25 Nh6+ and Qh7#) 25 Bg5?(After this natural-looking move, white's attack mostly dissipates. After 25 g4! Black is lost, e.g. 25 ... hg 26 h5 Nc5 27 Bc5 bc 28 hg fg 29 Nh6+) Bf6! 26 Bf6 (A painfully difficult choice-but if 26 Nd6? Ne5, while on 26 Qf3 Bg5 27 hg Qg5 28 Nd6 Re3 Black's counterattack is very strong.) Nf6 27 Nd4 Qe7 (After 28 Nc6 White still has a small positional edge, but more importantly he has only 12 minutes for 22 moves-therefor I could not refuse Greg's offer.) 1/2 -1/2 (Notes by Dana Nance)

0076 PIRC DEFENSE Charlotte YMCA, 11/17/85 S. Swaim(1431) T. Loesch(1641) 1 e4 d6 2 d4 Nf6 3 Nc3 g6 4 Nf3 Bg7 5 Bc4 00 (5 ... Ne4!? is interesting) 6 e5 de 7 Ne5 e6 8 00 Nd5 9 Bd2 Nd7 10 Re Ne5 11 de Nb6 12 Bd3 Nd7 13 Bf4 Nc5 14 Bc4 Qh4 15 Qd4 b6 16 Rad Bb7 17 b4 Rad 18 Qe3 Nd7 19 Eb5 Nb8 20 Bg5 Qg4 21 f3 Bf3 22 Qf3 Qg5 23 Rd8 Rd 24 Ne4 Qe5 25 c4 1-0

0077 PIRC DEFENSE Salisbury  
Open, 10-5-85 N. Harris(2239)  
Jackson(2193) 1 e4 d6 2 d4 Nf6 3  
Nc3 g6 4 f4 Bg7 5 e5 Nfd7 6 Nf3  
00 7 h4 c5 8 e6! fe 9 h5 gh! 10  
Rh5 Nf6 11 Rh4 cd 12 Nd4 Nc6 13  
Nc6 (13 Be3 Qb6=) bc 14 g4 Nd5!  
(GM Nunn calls this position  
unclear and stops his analysis  
of this position here. A wee bit  
of an understatement if you ask  
me!) 15 Qd3! h6! 16 Nd5!? ed 17  
f5 e6! 18 Qg3 (18 Rh2 is the  
suggestion of NM Jim Gallagher.)  
ef 19 g5 Qe7+ 20 Kd1 f4!! 21  
Bf4?(21 Rf4 is better for black  
because he ends up with two  
extra pawns in an endgame.  
However, it is better than the  
text.) hg (A simultaneous pin  
and fork. Not something you see  
everyday.) 22 Rh7?! Rf4 23 Bd3  
Bf5 24 Rh5? (Bg4+, winning the  
rook would be a convincing  
finish. However masters can  
make blunders like anyone  
else.) 25 Qd3 Re 26 Qh7+ Kf8  
0-1

0078 TORRE ATTACK 1985 NC  
Open Championship Goldberg(1514)  
Francis(1797) 1 d4 Nf6 2 Nc3 d5  
3 Bg5 h6 4 Bf6 ef 5 Nf3 Bf5 6 e3  
c6 7 Bd3 Bd3 8 cd f5 9 00 Bd6 10  
Re 00 11 e4 fe 12 de 13 Re4  
Nd7 14 Qe2 Nf6 15 Re3 Ng4 16 Re4  
Nf6 17 Re3 Bf4?! (Risky. A more  
solid approach would be Qc7  
preparing either Ng4 or Re.) 18  
Re7 Re 19 Re Re7 20 Qe7 Qe7 21  
Re7 Rb8 22 Ne5! (A strong  
positional move. Particularly  
by a ten-year-old! Moves of  
this quality don't bode good  
news for future opponents of  
this rising star.) a6 23 g3 Be5  
24 de5 Ng4 25 h3? (Throwing  
away a nice game. After 25 f4,  
Black is hard pressed to find a  
defense.) Kf8! 26 Rc7 Ne5 27 f4  
Nd3 28 b3 Nc5 29 Kf2 Ne6 30 Rd7  
Ke8 31 Rd2 Rd8 32 Re2 Kd7 33 f5  
Nd4 34 Rd2 Kc7 35 g4 Nb5 36 Rd8  
Kd8 37 Nb5 cb 38 b4 Kd7 39 Ke3  
Kd6 40 Kd4 b6 and Black won 0-1

0079 NIMZO INDIAN DEFENSE 1985  
NC Open Championship  
Frohman(1512) Stehley(1257) 1 d4  
d5 2 c4 Nf6 3 Nc3 e6 4 Bf4 Bb4 5  
Qc2 b6 6 a3 Bc3+ 7 Qc3 Bb7 8 Nf3  
Ne4 9 Qe3 Nc6 10 g3 dc? 11 Qe4  
Qd7 12 Rd 000 13 Bg2 g6 14 00  
Qe7 15 Ne5 Ne5?? 16 Qb7+ Kd7 17  
de+ Ke8 18 Bc6+ Kf8 19 Rd8+ Qd8  
20 Bh6+ Ke7? 21 Bg5+ f6 22 Bf6+  
1-0

0080 KINGS INDIAN DEFENSE  
Harvest Open 11-30-85  
Herendeen(1895) Jackson(2206) 1  
c4 Nf6 2 Nc3 g6 3 d4 Bg7 4 Nf3  
00 5 e4 c6!? (A move that the  
British GM Meestel has brought  
into tournament praxis. The idea  
is to play d5 which wrecks the  
white pawn center. It also  
induces white to advance in the  
center and create a target for  
black to take potshots at.) 6 e5  
Ne8 7 Be2 (7 Bf4!?) d6 8 ed Nd6  
9 d5?! (9 h3 makes more sense  
because it helps to limit  
black's development.) Bg4 10 Qb3  
Nd7 11 Be3 cd 12 cd Nf5 13 Ne4  
Ne3 14 Qe3 Nb6! 15 Rd Nd5 16 Qg5  
Qa5+ 17 Rd2 Be6 18 00 h6 19 Qh4  
Nf6 20 Nc3 Rfd'21 Bd3 g5 (This  
move leads to a queen exchange.  
If 22 Qg3?? Nh5.) 22 Qa4 Qa4 23  
Na4 Ba2 24 Rfd1 Bb3 25 Bh7+?(25  
Bc2 is better for black, but  
there is still life left in the  
position. Now black has fun!)  
Kh7 26 Rd8 Rd8 27 Rd8 Ba4 28 Ne5  
Bb3 29 Rb8 Bd5 30 Rd8 Be6 31 Rb8  
Ne4 32 Nd3 Bc4 33 Nb4 Nd6 34 Rd8  
Bb2 35 Rd7 Bf6 36 Nc2 a5 37 Na3  
Bd3 38 Rc7 b5 0-1

0081 BENKO GAMBIT The Fight I  
5/29/85 K. Kirby(1805) K.  
Baxter(1897) 1 d4 Nf6 2 c4 c5 3  
d5 b5 4 cb a6 5 ba Ba6 6 Nc3 g6  
7 g3 d6 8 Bg2 Bg7 9 e4 Nbd7 10  
Nge2 00 11 00 Ne5 12 f4 Nd3 13  
Rf3 c4 14 Nd4?? Qb6 15 Bf1 Nd7  
(15 ... Qd4?? walks into 16  
Be3 and it is white who wins  
rather than his opponent.) 16  
Nce2 Bd4+ 17 Nd4 Qd4+ 18 Kg2  
Rfb8 19 Bd3 cd 20 f5 Qe4 21 fg  
hg 22 Kh3 Qd5 23 b3 Qh5+ 24 Kg2  
Ne5 0-1

0083 QUEEN'S INDIAN DEFENSE US Closed Championship IM  
 McCambridge-GM Lev Alburt 1 d4 Nf6 2 Nf3 e6 3 c4 b6 4 Nc3 Bb7 5 a3 g6 6 Bg5 h6 7 Bh4 Bg7 8 Qc2 d6 9 Rd Qe7 10 e3 a6 11 Be2 Nbd7 12 00 g5 13 Bg3 Nh5 14 d5 Ng3 15 hg 000 16 b4 g4 17 Nh4 Bf6 18 de fe 19 Ng6 Qh7 20 Ne4 Kb8 21 Nf6 Nf6 22 Bd3 Rhg 23 c5 Qd7 24 b5! bc 25 ba Ba8 26 Qb2+ Ka7 28 Nh4 e5 29 e4 Qa4 30 Qf7 Rc 31 Qc4 Qa3 32 Nf5 Rb8 33 Nd6 cd 34 Qf7+ Kb6 35 Rb+ Kc6 36 Bb5+ Rb5 37 Qg8 Qa6 38 Qe8+ Kb6 39 Rb5+ Qb5 40 Qd8+ Kb7 41 Ral 1-0

0084 ENGLISH OPENING US Closed Championship IM McCambridge-GM  
 Kavalek 1 d4 d6 2 c4 e5 3 Nf3 e4 4 Nfd2 f5 5 Nc3 Nf6 6 e3 g6 7 f3 Bh6 8 fe Be3 9 ef Qe7 10 Be2 Bf5 11 Nf3 00 12 Be3 Qe3 13 Qd2 Qd2+ 14 Kd2 Nc6 15 d5 Ne7 16 Rhf c6 17 Rae cd 18 cd Bd7 19 Nd4 Rf7 20 Bc4 Nf5 21 Ne6 Rc8 22 Bb3 Re7 23 Rf4 Be6 24 de6 h5 25 h3 h4 26 Nb5 d5 27 Bc2 Rc5 28 Nd6 Nd6 29 Rf6 g5 30 Rg6+ Rg7 31 Rf6 Re7 32 Rg6+ Rg7 33 Rf6 and Kavalek instantly claimed a draw on repetition because he has an inferior position. 1/2 - 1/2

0085 O'KELLY SICILIAN US Closed Championship GM Kudrin - IM  
 McCambridge 1 e4 c5 2 Nf3 a6!? 3 c4 (Also worthy of consideration is 3. c3) Nc6 4 d4 cd 5 Nd4 Nf6 6 Nc3 e5 7 Nf5 d5 8 cd Bf5 9 ef Nd4 10 Bd3 Nd5 11 00 Bb4 12 Be4 Nc3 13 bc Bc3 14 Rb6 00 15 Qh5 Qd6 16 Bg5 f6 17 Be3 Rab 18 Bb7 Nb5 19 Qf3 Rfd 20 a4 Nd4 21 Qh5 a5 22 Be4 Rb4 1/2 - 1/2

0086 POLISH OPENING Rated Game, 10-15-85 Fuerstman(2121)  
 Jackson(2206) 1 b4 e5 2 Bb2 Bb4 3 Be5 Nf6 4 a3 Nc6 5 ab Ne5 6 d4 Ng6 7 c4 d5 8 c5 Ne4 9 Nf3 00 10 e3 Nh4 11 Nbd2 Bg4 12 h3 Bh5 13 g4 Bg6 14 Ne5! (The only move.) Qf6 15 Ne4 Be4 16 Rg Rfe 17 f4! (Another strong move which stops black's attack in its t racks. Excellent defense by the NCCA president pulled out this game.) Qd8 (Actually Qe7 may be a better alternative.) 18 g5 Re5 19 de Nf3+ 20 Kf2 Ng1 21 Kg1 f6 22 ef gf 23 h4 fg 24 hg Qe7 25 Ra2 Qe6 26 Rh2 Re 27 Kf2 Bg6 28 Qd4 Qe4 1/2 - 1/2

0087 CLOSED SICILIAN 1985 NC Invitational Champ. R.  
 Spurrier(2085) D. Nance(2144) 1 g3 c5 2 Bg2 Nc6 3 e4 g6 4 Nc3 Bg7 5 d3 d6 6 f4 e5 7 Nce2?! b5 (Discouraging 8 c4 and attempting to profit from the removal of White's QN from active service.) 8 Nf3 Be6 9 00 Nge7 10 c3 00 (I toyed with the idea of 10 ... d5 but decided the likely result was mass liquidation after 11 ed [11 Ng5!]? Bd5 12 fe Ne5 13 Ne5 Be5 14 Bd5 Qd5-moreover my king is uncomfortably exposed.) 11 Be3 b4 12 Qd2?! (I was surprised White didn't play 12 d4, on the principle that an attack on a flank should be met by a counterattack in the center. In general it seemed to me that Robert was hurt in this game by playing waiting moves when decisive action was called for.) bc 13 bc Qa5 14 Ng5 Bg4 15 Rac? (Passing up the chance to play 15 f5!, with the threat of 16 f6. Black cannot answer 15 ... gf 16 ef Bf5 because of 17 Rf5!) f6 16 Nf3 Rab 17 h3 Be6 18 Rc2 Rb6 19 g4 Rfb 20 fe Ne5[del!]?21 Ne5 de 22 Bh6 Bh8 (White's kingside attack is as dead as doorknob, so he belatedly tries for counterplay in the center.)23 d4 cd 24 cd Qd2 25 Rd2 Rb2 26 d5 Rd2 27 Bd2 Rb2 28 Rd (I was worried about 28 Bc3 Re2 29 de when it is difficult for Black to get his Rook back to defend. For example: 29 ... Rc2 [Nc6!- Jackson] 30 Rd! Rc3 31 Rd8+ Kg7 32 Rd7 Kf8 33 Rd8+ with a draw.) Bd7 29 Nc6 Nc8 30 Be3 Bg7 31 Rd2 Rb4 32 Bf1 (32 Bc5? Rc4) Bf8 33 Bd3 Nb6 34 Rc2 a5 35 Nd1 Rb1 36 Rd2 (Up to now I have played well in time pressure, but with less than two minutes left for five moves I make a terrible blunder. After 36 ... Rc1 37 Bb6 Bb4 38 Rf7 Rd1+ 39 Bf1 Black is winning.) Bb4??) 37 Bb1 1-0 (Notes by Dana Nance)

Remember When —

by R. Grady Brown

Remember when the "Carolina's Open started? Who started it and when did it end? (We don't know; probably sometime in the early 50's). This was the most successful of all Carolina tournaments up until the LPO. South Carolina usually held theirs every other year at the Ocean Forrest Hotel in Myrtle Beach, but it was also held in Beaufort, S.C. and once in Augusta, Ga. North Carolina usually held theirs in Raleigh, but also in Charlotte, Asheville, and Shelby.

I remember two tournaments at Ocean Forrest. One year only two Masters attended, (3 or 4 was the average), IM Norman Whitaker and NM Ariel Mengarini. They were paired in the last round because of equal scores and equal color allocation. However, a coin toss was necessary, whereby Mengarini received the White pieces. Realizing that he would have to play Black against a younger, more skilled opponent, Whitaker refused to play, and left. Wonder what Norman would have said had he gotten White? He certainly did not want to play Mengarini!

On another occasion, two T.D.'s arrived at the tournament site to direct (someone goofed!). After much debate, the officials did not use either one, but instead, accepted a suggestion by Dr. Norman Hornstein of Southport, to let Grady Brown direct. I was on the verge of objecting, but Norman told me to "shut up"! I actually knew nothing about directing a chess tournament, and as you may have already guessed, Norman actually did most of the work by looking over my shoulder and telling me what to do. By round 5 I was beginning to catch on and shortly thereafter became a T.D. "Darn you Norman; you gave me a long lasting headache!"

I don't know when the first matches were played with Virginia and South Carolina, however, I do know when they ended. The Virginia match was cancelled by President Donald Schultz, his last year of office in 1966. In both state matches, North Carolina players were reluctant to travel. Somehow it seemed longer from Raleigh to Richmond than from Richmond to Raleigh, and the same for Columbia. Basically, North Carolina players did not have the spirit or desire to compete at that time.

The last South Carolina match was to be held in Columbia in 1967, and as President, I began to look for strong players early. No volunteers! I got on the phone and called and called — nothing. We had agreed that a minimum of 6 players would attend, and if there were less than 6 the game(s) would be forfeited. Now, it was Friday before the match to be held Sunday afternoon. What to do? I appealed to the Charlotte "Y" Chess Club. I even said that I would furnish transportation and buy everyone a sandwich. I finally recruited five others and on that fateful day we arrived in Columbia.

South Carolina was disappointed that we had only brought six players. (They were hoping for about 12). They were really ready. Being the highest rated North Carolina player attending, I played 1st Board. After about 40 minutes, we had lost on the lower three boards; after another 30 minutes, we had lost on all boards except Board 1. Most of the players then gathered around the remaining board. In a pall of smoke, heavy breathing could be heard as well as the staccato tick of the clock. At move 25, my opponent (whoever that was) made a weak move. I am sure he noticed it right away, but gave no indication. He was a worthy opponent. I spent a long time before replying, and it was a good move.

My opponent had lost control of a key square. Shortly, thereafter, he resigned. For a moment, there was utter silence! And then, all of a sudden, there were thunderous applause. South Carolina had won the match, but was denied a full sweep! Two weeks later, after conferring with the NCCA Board of Directors, the match was cancelled.

On November 20, 1966 at 12:00 noon, the last match between North Carolina and Virginia was held in Richmond. I played on Board 7 (the bottom board this time). The first three boards from Virginia were held by Masters, led by Elliott Hearst. My opponent was Rusty Potter who at this time was a young Expert. On move 22 Rusty asked me what my rating was. It irked me, perhaps because of the way he said it, or because he did it on my time. (True, I may have asked the same thing when I was a Class "C" player, but by the time I was Class "A", I knew enough to go to the T.D.'s table and find out. After all, this was a rated match.) So, I thought for a few moments, and said with a slight smile, "I just passed 1400 and now it's 1409!" Rusty's face paled. I could see the wheels turning. I surmise that he was thinking, "If I even draw with this yo-yo, I'll lose rating points!" North Carolina lost the match; but scored 1 big "draw" on Board 7.

In conclusion, let me mention the names of some of the players who helped the NCCA in that era (even though, some are no longer with us). Bill Adickes, Ron (time trouble) Simpson, Donald Schultz, David Steele, Alan Ruffy, Vernon Robinson, Peter Gamm, Russell Brown, David Stern, Al Pearson, Lee Taylor, Dana Tabor, Maurice Dana, Dr. Norman Hornstein, Dr. George & Kathy Harwell, Dr. Stuart Noblin, Dr. Al (steak gambit) Jenkins, Dr. Al Lipkin, Jon Pietras, David O'Bryant, Oliver Hutaff, Bernie & Joan Schmidt, Gentleman Jim Watson, Terry & Patsy Newman, Thompson, Cooley, ... I can't remember them all. Thanks for the memories!!

EDITORS NOTE: When I returned from Vietnam in late 1968, I met Russell Brown, Grady's son, who introduced me to organized chess. In February of 1970, I competed in my first tournament, the Groundhog; the director: Grady Brown. Thank you for the memories, Grady. LLF.

To: Members of the NCCA

Date: November 27, 1985

From: Wilder Wadford

P.O. Box 1123

Weaverville, N. C. 28787

Dear Members:

The Executive Committee chaired by myself and comprised of Leland Fuerstman, Robert Singletary, Kenneth Baxter, Robert Spurrier and Laurence Goldberg met and conferred at various times during the past month and have adopted the Articles of Incorporation and By-laws of the North Carolina Chess Association Inc. effective November 27, 1985. The salient features of the Articles and By-laws are as follows:

(1) The Corporation shall be a non-profit corporation which will qualify as an exempt corporation under Section 501(c)(3) of the Internal Revenue Code and will allow us to receive charitable donations from outside sources.

(2) The purpose of the Corporation will be to broaden and develop chess as art and recreation for the general public with special emphasis on the development of chess participation by the youth of this State.

(3) The Board of Directors shall consist of five members: Director/Chairman of the Board/President; Director/First Vice-President; Director/Second Vice-President, Scholastic Chess; Director/Secretary of the Board/Secretary-Treasurer and Director/Editor.

(4) All Directors/Officers shall be elected every two years by the membership except for the Director/Editor who shall be appointed by the Board of Directors with the President casting the deciding vote in the event of deadlock.

(5) The conduct of all affairs of the Corporation shall be controlled by the majority vote of the Board of Directors with each Director/Officer receiving one vote. Any Director/Officer who holds more than one position shall be entitled to an additional vote for each position held.

(6) There shall be four classifications of members: Life, Regular, Junior and Participating. Life, Regular and Junior members shall be entitled to vote at the annual and special meetings of the members. Participating members shall not have the right to vote or the right to hold office. Life, Regular and Junior members shall be entitled to receive the Carolina Gambit. Life members shall receive one free entry in the next occurring Corporate Championship. Effective January 1, 1986, anyone who pays 20 times the current dues rate of a regular member in a lump sum payment shall be a Life member; anyone who pays \$10.00 shall be a Regular member; anyone under the age of 18 who pays \$8.00 shall be a Junior member; and anyone who pays \$3.00 per year is a Participating member. All dues are subject to change by a majority vote of the Board of Directors.

(7) All Directors/Officers shall be at least 18 years old and residents of North Carolina and all issues of residency will be decided by the Board of Directors with a minimum requirement of 6 months residency in this state.

(8) The annual meetings shall take place in conjunction with the championship tournament between August 1 and October 31 of each year.

(9) Special meetings of the members may be called by a majority vote of the Directors/Officers or by any member pursuant to a written request of the membership of not less than 25% of the members entitled to vote.

(10) Ten percent of the members entitled to vote represented in person or by proxy shall constitute a quorum for the annual and special meetings. A quorum for removal of a Director/Officer shall be 50% of the membership.

(11) Members may vote by proxy provided proxies are delivered to the Secretary in proper form as determined by the Board of Directors. Directors/Officers may be removed from office with or without cause by a two-thirds vote of the members entitled to vote provided a quorum for removal is present.

(12) The By-laws may be amended or repealed and new By-laws may be adopted by the affirmative vote of a majority of the directors but the directors shall not have the power to alter the number of directors, staggering the term of a director, limiting the power of the Board or prescribing different quorum or voting requirements for member or director action as required.

(13) The Board of Directors are authorized to determine the dates, locations, schedules, entry fees, time limits, prizes, special conditions, residency requirements, and tournament directors for all corporation tournaments. The Corporation shall be responsible for the Championship Tournament, Invitational Tournament, Scholastic Tournament, Grand Prix and any other tournaments which the Corporation may sponsor upon the approval of the majority of the Board of Directors.

(14) The Corporation shall be the State Chapter of the United States Chess Federation for North Carolina.

Anyone who desires to have a full length copy of the Articles of Incorporation and By-laws may obtain same by sending me \$7.00 at the address indicated above.

The initial Board of Directors beginning January 1, 1986 shall be Leland Fuerstman (Director/Chairman of the Board/President/Editor), Robert Singletary (Director/First Vice-President), Laurence Goldberg (Director/Second Vice-President, Scholastic Chess), and Kenneth J. Baxter (Director/Secretary of the Board/Secretary-Treasurer). Laurence Goldberg was appointed by unanimous vote of the initial Board of Directors, the original NCCA officers, to fill the newly created position until the annual meeting in 1986 when the members shall elect a person to said office.

I would personally like to thank the members of this committee for their efforts in creating what will be a long term organization designed to efficiently and flexibly deal with all of the goals and problems of our organization for the future. And finally, I would like to thank the membership at large for demonstrating their foresight in authorizing this new organization.

---

The following is a rating list of all current NCCA members which includes NCCA expiration date. PLEASE RENEW PROMPTLY.

(Special thanks to John Welch for updating the list).

(November Supplement)

1 2553 V McCambridge	0786	21 1998 R Simpson	0986
2 2299 M Feinstein	0886	22 1993 R Freeman	0486
3 2262 G Samsa	0686	23 1992 J Kirby	0386
4 2221 N Harris	0887	24 1992 A Patrick	0486
5 2206 L Taylor	0999	25 1989 F Necci	0886
6 2193 R Jackson	0986	26 1988 A Cruz	0786
7 2168 R Cunningham	0886	27 1974 J Rymuza	0786
8 2144 B Henson	0986	28 1971 J Dupree	0386
9 2127 M Becker	0986	29 1971 J Thompson, Sr	0686
10 2114 L Fuerstman	1186	30 1970 R Maingi	0586
11 2111 M Alsberry	0786	31 1966 M Noble	0586
12 2105 D Nance	0186	32 1963 A Cooley	1086
13 2100 D Erb	0386	33 1959 K Kirby	0386
14 2083 M Chappell	0886	34 1958 G Newsom	0886
15 2055 S Cabaniss	0986	35 1952 J Bunch	0986
16 2049 B Stuart	0786	36 1950 A Haft	0186
17 2038 G Evans	0386	37 1933 D Haines	0786
18 2035 J Tobin	1285	38 1931 K Baxter	1186
19 2009 T Magee	1286	39 1926 P King	0686
20 1999 R Spurrier	0786	40 1923 G Lundy	0786

41	1922	A Menius	9999	106	1675	D Hahn	0186
42	1911	J Callaway	0786	107	1668	L Zinzow	0786
43	1910	L Goldberg	0786	108	1660	T Bridges	0886
44	1900	J Pietras, Sr	1285	109	1659	A Funderburk	0386
45	1897	P Hargett	0486	110	1659	V Mutha	0686
46	1897	E Woro	0686	111	1642	S Styers	0986
47	1895	G Herendeen	0486	112	1641	S Willis	0986
48	1893	C Dulin	0986	113	1624	T Loesch	0586
49	1891	J Lee	0186	114	1619	E Biddix	0486
50	1882	G Brown	1286	115	1619	W Simpson	0586
51	1875	T Sloan	0886	116	1619	M Sykos	0986
52	1866	D Slater	0986	117	1618	A Carlson	0186
53	1860	J Francis	0586	118	1607	M Satterwhite	0786
54	1859	T Riela	0786	119	1602	V Bonfanti	0786
55	1851	B Covington	0786	120	1601	M Buaiz	0986
56	1850	R Moore	0286	121	1601	M Kolb	0186
57	1848	J Clifford	0986	122	1600	J Fowler	0586
58	1848	R Fentress	0586	123	1599	T Cato	0486
59	1835	J Thompson, Jr	0886	124	1595	J Bailey	0486
60	1828	W Foster	9999	125	1593	O Rodriguez	0786
61	1825	R Steward	0186	126	1589	M Long	0786
62	1822	N Neel	0186	127	1585	P Lucas	0386
63	1819	J Eller	0487	128	1578	L Cobb	0986
64	1814	J Helton	0486	129	1576	D Holmes	0886
65	1812	U Helsten	0786	130	1567	J Ward	0786
66	1810	J Welch	0387	131	1565	A Fleming	0886
67	1804	A Horton	0986	132	1565	A Sheffi	0486
68	1803	R Dennis	0986	133	1564	A Edwards	0486
69	1803	R Lombard	0586	134	1562	D Petranic	0786
70	1798	S Posnanski	0186	135	1551	D Stewart	0886
71	1797	J Blanning	0786	136	1550	F Alpiser	0786
72	1794	R Bleier	0886	137	1543	J Welch	0886
73	1793	A Wadford	9999	138	1537	G Stout	0186
74	1792	L Thet	0986	139	1531	F Quick	0186
75	1789	W Hargrove	0786	140	1524	T Martin	0886
76	1788	A Clyburn	0886	141	1521	D Owens	0386
77	1784	J Freeman	0786	142	1516	J Wallace	0786
78	1784	M Scott	0886	143	1513	W Jones	0486
79	1784	C Worley	0886	144	1511	S Welborn	0786
80	1781	J Dutton	0886	145	1509	B Holland	0986
81	1777	D Griffin	0986	146	1501	R Goldberg	0787
82	1776	G Hall	0986	147	1499	S Frohman	1285
83	1773	D Schmidt	0486	148	1497	P Carriger	9999
84	1772	R Starnes	0886	149	1495	M Austin	0187
85	1769	D Richards	0886	150	1492	W Corkey	0486
86	1768	B Addickes	9999	151	1489	K Davis	0386
87	1768	C Morris	0586	152	1486	T Williams	0786
88	1766	M Williams	0786	153	1476	M Englestad	0486
89	1755	A Lipkin	9999	154	1471	E Chamberlain	0986
90	1755	J Thomas	0886	155	1468	H Martinat	0186
91	1752	W Warren	0986	156	1467	J Jackson	0386
92	1746	J Sword	0186	157	1467	L Wright	0887
93	1743	J Brueckner	0786	158	1464	D Johnson	0986
94	1739	J Smith	0786	159	1461	C Hamn	0386
95	1736	S Long	0586	160	1460	J Dowell	0786
96	1726	B McCartney-F	0486	161	1456	L Holloway	0786
97	1722	C Neal	0786	162	1445	B Davenport	0487
98	1719	D Daves	0186	163	1443	S Swaim	0186
99	1709	T Powell	0186	164	1441	W Gordy	0786
100	1706	W Haigler	0486	165	1437	J Wilson	0186
101	1704	B Kearns	0486	166	1436	M Rishavy	0986
102	1694	H Minchaca	0786	167	1429	S Evans	0886
103	1693	D Miller	9999	168	1426	J Goad	0386
104	1683	R Singletary	1186	169	1420	M Crow	0186
105	1678	A Patel	0586	170	1417	S Yun	0886

171	1410	G Branton,Jr	0786	236	1239	A Selim	0486
172	1409	J Ellington	0486	237	1232	W Bennett	0486
173	1401	P Cousins	0286	238	1225	R Capps	0486
174	1400	R Ramachandran	486	239	1224	R Ward	1086
175	1398	S Kaufmann	0387	240	1222	S Delaney	0486
176	1397	D Hinson	0486	241	1221	L Mitchum	0486
177	1397	K Savage	0186	242	1220	D Goodman	0986
178	1386	J Duncan	0886	243	1219	C Chang	0486
179	1381	S Mather	0486	244	1218	M Briggs	0486
180	1376	J Ingram	0486	245	1213	M Kahill	0387
181	1374	R Day	0686	246	1212	B Onisick	0486
182	1371	K Brodie	0486	247	1206	C Kaufmann	0487
183	1367	V Murty	0486	248	1204	M Brueshaber	0386
184	1366	J Verga	0786	249	1203	O Wilson	0386
185	1365	G May	0486	250	1201	C Coble	0986
186	1364	J Grant	1286	251	1196	R McCall	0486
187	1360	C Chao	0486	252	1196	J Schmidt	0487
188	1360	J Price	0486	253	1195	P Worjolah	0486
189	1356	Z Filis	0186	254	1188	A Brooks	0986
190	1355	R Cameron	0486	255	1185	S Mayo	0486
191	1354	J Garcia	0786	256	1185	J Wright	0986
192	1354	W Turnier	0386	257	1183	W Adderholdt	0486
193	1350	P Bao	0486	258	1183	C Hardin	0486
194	1350	H Horton	0886	259	1178	S Heaslet	0486
195	1349	G Sewell	0486	260	1172	C Pennix	0886
196	1346	W Brooks	0486	261	1165	J Phifer	0186
197	1346	S Frey	0386	262	1164	S Osama	0486
198	1345	T Skinner	0186	263	1164	J Summers	0586
199	1345	B Whitehurst	0486	264	1161	B Edwards	0186
200	1340	G Barber	0586	265	1161	B Russell	0386
201	1328	M Price	0386	266	1159	M Finlator	0486
202	1327	B Bales	0486	267	1155	C Martin	0386
203	1325	E Reese	0986	268	1155	R Wilkins	0186
204	1321	C Edwards	0486	269	1153	J Ramachandran	486
205	1320	O Osteen	0786	270	1150	J Yandle	0387
206	1317	J Phelps	0386	271	1148	S Harris	0186
207	1316	D Williams	0486	272	1147	J Yandle	0387
208	1314	L Guignard	0186	273	1137	R Guilliams	0186
209	1311	T Miller	0486	274	1135	G Elrod	0386
210	1309	K Seltmann	0486	275	1134	F McGinnis	0586
211	1308	D Katz	0186	276	1133	R Windley	0486
212	1301	J Shirlen	0186	277	1131	B Cordell	0487
213	1294	L Matthews	9999	278	1129	B Iddings	0486
214	1294	M Sparrow	0686	279	1128	D Romanowski	0486
215	1286	L Baker	0486	280	1125	A Kelley	0486
216	1284	G Faulcon	0486	281	1123	J Smith	0586
217	1284	I Huang	0186	282	1121	B Helton	0186
218	1284	P McNar	0786	283	1120	M Morrison	0386
219	1281	D Propst	0586	284	1110	C Bowen	0486
220	1276	R Hunt	0486	285	1105	E Amerson	0486
221	1271	L Brim	0586	286	1105	D Little	0486
222	1269	J Fulbright	0486	287	1101	L Bradley	0386
223	1263	B Rau	0986	288	1096	H Arthur	0986
224	1261	R Clark	0186	289	1096	J Ett	0386
225	1258	G Commings	9999	290	1094	J Whiteheart	0786
226	1257	T Covington	0186	291	1093	D Chewinging	0486
227	1257	N Sherwood	0486	292	1092	T Chapman	0486
228	1256	D Stehley	0386	293	1088	C Tryon	0486
229	1252	E Smith	0287	294	1087	M Fox	0486
230	1248	B Cordell	0487	295	1085	R O'Donnell	0386
231	1247	M Lipkin	0986	296	1080	P Ward	1086
232	1246	C Helms	0386	297	1074	G Sharer	0986
233	1245	M Faulcon	0486	298	1068	D Craig	0486
234	1242	E Taylor	0386	299	1068	T Mayes	0386
235	1240	T Taefi	0186	300	1063	D Stevens	0486

301	1061	J Rowland	0486	336	916	J Blazier	0486
302	1059	K Spittle	0186	337	915	J Tremblay	0186
303	1057	M Lewis	0386	338	909	W Faulcon	0486
304	1052	R O'Burch	0486	339	905	R Castellino	0486
305	1050	B Cruikshank	0486	340	904	J Strickland	0386
306	1050	J Schwartz	0487	341	900	J Checkner	0486
307	1041	J Van Wagoner	0486	342	891	D Stepp	0387
308	1038	M Manohar	0686	343	888	J Cobb	0386
309	1038	M Stegall	0486	344	888	R Haigler	0486
310	1037	M Phillips	0486	345	886	R Naik	0386
311	1034	M Norton	0486	346	873	S Rast	0386
312	1032	J Guglielmi	0486	347	865	B Whysall	0486
313	1029	T Liao	0486	348	864	J Whitehurst	0486
314	1027	K Larson	0486	349	859	C Will	0486
315	1015	R Oliver	0786	350	857	A Dahir	0486
316	1000	S Eisenbies	0486	351	856	L Barnes	0486
317	1000	E Langford	0486	352	856	S Mozingo	0486
318	995	J Kroll	0386	353	855	J Wallace	0486
319	995	T Nance	0386	354	846	C Kasey	0386
320	986	J Rhodes	0486	355	818	A White	4086
321	986	D Rountree	0486	356	815	G Seagle	0386
322	978	D Deese	0186	357	802	K Lee	0486
323	975	B Munsen	0486	358	794	M Keisler	0386
324	973	D Davis	0486	359	784	A Stegall	0486
325	972	R O'Donnell, Jr	386	360	774	F Sherman	0486
326	970	T Stanley	0186	361	760	J Barton	0486
327	960	J Rast	0386	362	760	M Rivers	0486
328	957	J Treadwell	0386	363	760	C Tart	0486
329	955	D Perry	0486	364	760	M Welch	0486
330	954	C Sumner	0487	365	760	T Zimmerman	0486
331	953	C Allen	0486	366	725	N Kekas	0486
332	947	B Desmond	0386	367	711	L Williams	0486
333	933	J Sherman	0486	368	703	D Schwartz	0487
334	933	K Thompson	0486	369	600	H Montgomery	0486
335	920	D Hill	0486				

## \*\*\*PAID ADVERTISEMENTS\*\*\*

Infinity's Screen Printing will design T-Shirts & Hats for your local club! (as seen at the 1985 N.C. Championship). Many styles from which to choose at discount prices..... For information call: John Pietras 704-536-7451 —

Other Tournament Results:

Not-For-Profit V, Oct 19, 1985, Section I, Joe Helton, 3-0, \$40. + Trophy. 2nd Ralph Lombard, 2-1 (Helton, a Senior at South Caldwell defeated Kevin Kirby, David Griffin, and Ralph Lombard). Section II, John C. Anthony, 3-0, \$50. 2nd Tony Cato, 2½-½. Section III, Todd Good, 2½-½, \$40 + Trophy, =2nd Dr. Dennis Chipman, Jim Chopko, & John Meeler, 2-1. Unrated Section, Douglas M. Smith, 4-0, Trophy + NCCA Memb., =2nd, Charles Greeson, Paul Johnson, Mike Martin, 3-1, NCCA Membs. Western Steer provided door prizes. John Thomas directed.

# NORTH CAROLINA CHESS ASSOCIATION

November 16, 1985



Leland L. Fuerstman  
320 Seneca Pl.  
Charlotte, N.C. 28210

The U.S. Chess Champion  
GM Lev Alburt  
P.O. Box 534, Gracie Sta.  
New York, N.Y. 10028

Dear Lev:

First of all, congratulations on achieving our most coveted National Title for the second time in as many years! Your reputation for self-sacrifice and your tireless determination have made you a character model for future American champions. I remain proud and honored to be associated with you both personally, and ideologically.

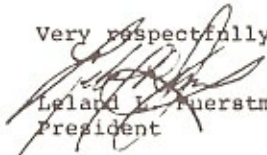
We, in North Carolina, are 100% behind your campaign to run for the USCF Policy Board member-at-large seat. Those of us who know you are already aware of your total dedication to our royal game; not only as a Champion player, but also as an author and instructor. Any Delegate or Voting Member of the USCF who is truly familiar with your many successful contributions to American chess since your arrival, would be remiss not to support your candidacy.

The issues which you outline in your letter of October 8, 1985 included: Scholastic chess, tournaments, achievements of American players, public relations, sponsorship, and making chess an attractive occupation. These issues, and others still unresolved, i.e. the Bobby Fischer issue, should be the responsibility of our National Organization. Unfortunately, the USCF has made little progress in solving many of these issues, instead, leaving the responsibility to those individual organizers and promoters who really care.

Your input and participation as a Policy Board Member will add a new constructive voice to the forum where national chess decisions are made; a voice which is desperately needed.

I will personally encourage all Delegates and Voting Members in Region IV to support you.

Very respectfully yours,

  
Leland L. Fuerstman  
President

## \*UPCOMING TOURNAMENTS\*

NOTE: All tournaments listed in the Gambit must be received at least 90 days in advance of publication and must require NCCA membership. A copy of the "Tournament Life Announcement" will be submitted to Tournament Clearinghouse Chairman Robert N. Singletary. Tournaments listed with at least 8-man sections automatically qualify for NCCA Grand Prix points.

January 3-5

Morehead City

9th Annual Morehead City Open (FIDE Rated) - 5-SS, 40/2, Webb Library, 106 S. 9th St., Morehead City 28557. EF: \$61 at site. \$\$250: 250 + Trophy to 1st. Reg: 7:00-7:40pm, Rds: 8, 16-6, 10-4. Ent: The Royall Game Shoppe, P.O. Box 888, Beaufort 28516 TD: Donald Miller, (919-728-3342) NS NC

January 3,10,17,24,31

Charlotte

The Yandle Family Classic - 5-SS, 30/1. (one Rd. per Friday evening) YMCA, 400 E. Morehead St., Charlotte 28202 EF: \$10. if received by 12-30, \$12 at site. \$\$ 40%-20%-10%. Reg: 7-8:00pm Rd: 8:30pm. Ent: Sam Swaim, P.O. Box 341, Harrisburg, 28075 LS

January 8,15,22,29,February 5

Charlotte

Rubicon I - 5-SS, (One Rd. per Wednesday evening). Shoney's, Woodlawn Rd. @ S. Blvd. (Off I-77), Charlotte 28210. In 2 Sections: Championship, TL 20/1, 20/1. Open to 1800 and above. Amateur, TL 30/1, 30/1. Below 1800. Both EF: \$2. per round. Free entry to 1st each section. Reg: 7:00pm, Rd: 8:00pm, Adjournment 11:15pm. Ent: Site LS Leland L. Fuerstman (704-523-2181).

January 8,15,22

Salisbury

Knight Riders VI - (One Rd. per Wednesday evening). Arts Council of Rowan County, 314 N. Ellis St., Salisbury 28144 3-SS, 40/75, 35/60. EF: \$1. per round. Free entry to 1st. Reg: 6:45pm, Rd. 7:00pm. Ent: At site. NS NC Larry Wright (704-633-3801)

January 11

Chapel Hill

Ram XXXVI - 3-SS, 40/90, SD/30, UNC-CH, Student Union, (Hwy. 54 Bus.), Chapel Hill 27514. EF: \$5. if received by 1/4, \$6. at site. \$\$ (b/8) \$26 to 1st. Reg: 9-9:40am, Rds: 10-2-6. Ent: Robert N. Singletary, NTD, 3712 Dade St., Raleigh 27612 (919-782-3809). NS NC

January 18

Hudson

Not-For-Profit VII - 3-SS, 40/80, 30/60, G/30. South Caldwell High School, 321 S., Hudson 28638. EF: \$6. if received by 1-17, \$8. at site. \$\$ (b/8) \$50 to 1st or Trophy + \$40. Reg: 9-9:45am, Rds: 10-2-6. Ent: John E. Thomas, 115 Joyceton Ch. Rd., Lenoir 28645 (704-728-6945) NS NC

February 1

Beaufort

Downeaster #16 - 4-SS, 60/90, 40/1. The Royall Game Shoppe, Ole Towne Centre, 120 Turner St., Beaufort 28516. EF: \$12. if received by 1/29, \$15. at site. \$\$ (258 b/16): 129-86-43; trophy to 1st. Reg: 9:30-9:50am, Rds: 10-1-4-7. Ent: The Royall Game Shoppe, P.O. Box 888, Beaufort 28516 Don Miller (919-728-3342) NS

February 1

Salisbury

H. Mark Arthur Open - 3-SS, 40/90, 30/1. In 8 man sections. Site 7, 220 N. Fulton Ave, Salisbury 28144 EF: \$10. \$\$ 70-35 per top 4 sections, \$60-30 all others, special prize drawing. Reg: 9-9:30am, Rds. 10-2-6. Ent: Larry Wright, 14 Heritage Ln., Salisbury 28144 (704-633-3881. NS NC W.

February 5, 12, 19

Salisbury

Knight Riders VII - Details same as K.R. VI, Entries at site.

February 8

Hudson

Not-For-Profit VIII - Details same as N-F-P VII, Early EF by 2-1.

February 12, 19, 26, March 5, 12

Charlotte

Rubicon II - Details same as Rubicon I, Entries at site.

March 1

Beaufort

Hightider #5 - 3-SS, 30/60. The Royall Game Shoppe, Ole Towne Centre, 120 Turner St., Beaufort 28516 EF: \$10. if rec. by 2/26, \$12. at site. \$\$ (60 b/8) 40-20. Trophy to 1st each section. Reg: 9:30-9:50am, Rds: 10-2-6. Ent: The Royall Game Shoppe, P.O. Box 888, Beaufort 28516 Don Miller (919-728-3342).

## NORTH CAROLINA CHESS ASSOCIATION

## STATEMENT OF REVENUES AND EXPENSES

For the Year Ended August 31, 1985

## REVENUES

Memberships	\$1,763	
Interest on checking	32	
Entry fees to NC Championship	2,180	
Miscellaneous	344	Note 1
TOTAL REVENUES	4,319	

## EXPENSES

Gambit	\$1,218	
1984 NC Open trophy and prizes	305	
1985 NC Championship director's fee	50	Note 2
Delegates mailing	143	
Telephone	103	
Service awards	75	
Postage	120	
Tournament supplies	72	
USCF affiliates fee	25	
Bank charges	15	
Gran Prix prize--1984	50	
Gran Prix prize--1985	100	
1985 NC Championship prize fund	2,500	
TOTAL EXPENSES	4,776	
EXPENSES IN EXCESS OF REVENUES	(\$457)	

Note 1: This amount includes the difference between the entry fees (\$2,180) and the prize fund of \$2,500. The Charlotte Observer guaranteed the prize fund. On top of the guaranteed Prize fund the Observer paid for all the trophies and the rating fee for the tournament. They also paid a bonus to the NC Champion (Dana Nance--\$300) and the Amateur Champion (Kevin Kirby--\$200)

Note 2: This is the only cost the NCCA paid to run the NC Championship. The Charlotte Observer covered all the other costs. The Hotel facility was provided at a fee based on the number of room nights rented. Due to the large number of NCCA members staying at the Raddison we were able to get the room for free.

CHESS CLUBS \*\*\*\*\* CHESS CLUBS \*\*\*\*\* CHESS CLUBS \*\*\*\*\*CHESS CLUBS

TUESDAY:

Winston-Salem Chess Club, 7:00 til. South Fork's "Our House", Country Club Rd., Winston-Salem. Info: Allen Cooley, 1200 Red Oak Rd., W.S. 27106 Bring Equipment.

WEDNESDAY:

Asheville Chess Club, 7:30 pm til. North Asheville Recreation Center, (off Merrimon Ave. at N. Larchmont), Asheville. Info: Bill Adickes 704-253-4491 or Bob Eoff 704-255-8739

Boone Chess Club, 7:00pm til. Plaza Motel, Boone. Bring Equipment. Info: Ashok Patel, 704-264-2457

Cape Fear Chess Club, 7-10:00pm, UNC-Wilmington, Student Union Bldg., Wilmington. Bring equipment. Info: Ulf Helsten ?

Charlotte Chess Club, 7-11:15pm, Shoney's, Woodlawn Rd. @ South Blvd. (Woodlawn Rd. off I-77). WEEKLY TOURNAMENT COMPETITION. EF: \$2. Bring equipment. Info: Leland Fuerstman, 704-523-2181.

Greensboro Chess Club, 7-10:00pm, Folk Recreation Center, 3918 Clifton Rd., Greensboro. Info: Richard Ward, 919-852-2854 Bring Equipment.

Knight Riders Chess Club, 6:30pm til, Arts Council of Rowan County, 314 N. Ellis St., Salisbury 28144. Info: Fred Quick, 704-636-9265 or 633-3881. Bring equipment.

Morehead City/Beaufort Chess Club, 7:00pm til. The Royale Game Shoppe, Ole Towne Centre, 120 Turner St., Beaufort. Shoppe open daily for chess! Donald Miller, 919-728-3342

FRIDAY:

Charlotte "YMCA" Chess Club, 7:30-11pm. YMCA, 400 E. Morehead St. Charlotte. WEEKLY TOURNAMENT COMPETITION. Bring equipment. Info: Sam Swaim, 704-455-5274.

Raleigh Chess Club, 7:30-11:30pm. Kiwanis Recreation Center, 2525 Noble Rd. Raleigh. 25¢ per meeting. Ed Bremson 919-834-0865

SATURDAY:

Yadkin Valley Chess Club, 9:00am-5:00pm. Oak Grove Community Center, Oak Grove Rd., Elkin. Info: Steve Greenlee 919-835-6389

**CAROLINA  
GAMBIT**

C/O Leland L. Fuerstman  
320 Seneca Place  
Charlotte, N.C.  
28210



Non-Profit Org.  
U.S. Postage Paid  
Charlotte, N.C.  
Permit No. 59