

THE NC GAMBIT



The official publication of the North Carolina Chess Association

Autumn 2001

2001 North Carolina Championships Extraordinary success.

Six champions crowned – \$5,500 Guaranteed Prize Fund Paid in Full!

Leland Fuerstman

A grand total of 106 of North Carolina's most competitive chessplayers converged upon the Independence Hotel in Charlotte over the Labor Day weekend in order to participate in the 2001 North Carolina Championships. The \$35 hotel rate, \$50 entry fee and guaranteed prize fund assured a friendly and convenient event for all NCCA members. A total of \$5,500 was paid to 32 different players! Clear first place in the Championship section was captured by International Master Jonathan Schroer (2457) of Cary, NC. The 38-year-old, married, Montessori School Principal defeated NM Garrick Wells (2097) in round 1, Harold Mouzon (2190) in round 2 and NM Matthew Hoekstra (2306) in round 3 before yielding draws to NM John Kirby (2243) and NM Frankie Newton (2190). For his 4-1 finish Schroer collected \$600 cash and the title of 2001 N.C. State Champion! Equal 2nd-6th place with 3½-1½ were NM Matthew Hoekstra (2306) of Charlotte, Justin Daniel (2150) of Charlotte, NM John Kirby (2243) of Raleigh, Kevin Kirby (2159) of Cary and NM Frankie Newton (2190) of Lincolnton each winning \$120.

The Top Class "A" Title was captured by Paul King (1828) of Fayetteville who bested his opponents with a final score of 4-1 winning \$400. Second place went to Ken Baxter of Mooresville (1922) who scored 3½-1½ and pocketed \$200. Top under 1900 was won by Thomas Adams (1825) of Durham who also scored 3½-1½ and earned \$200.

The Top Class "B" Title was taken by E. Lee Raby (1606) of Cameron who turned in the highest single score of the tournament with 4½-½. For his efforts Raby collected \$400. Clear second place was captured by Daniel Garrett (1580) of Southern Pines with 4-1 who took home \$200. Equal 1st-4th under 1700 was shared by David Griffin (1661) of Charlotte, Paul Calloway (1630) of Horseshoe, Mike Lipkin (1616), and 13-year-old Ian Sanders (1366) of Hendersonville each scoring 3½-1½ and winning \$50.

The Top Class "C" Title was captured by D. Paul Jenkins (1587) of Charlotte who scored 4-1 and pocketed \$400. Equal 2nd-4th were Mark Schulz (1550), Walter Overman (1467), and Robert Botelho (1366) each scoring 3½-1½ and winning \$67. Equal 1st-2nd Under 1500 were Chris Mabe (1460) and Jesse Eddelman (1087) each scoring 3-2 and winning \$100.

The Top Class "D" Title was won on tiebreaks by Chris Griffin (1256) over Euphemia Mu (1276) and Albert Carlson (1331) who each scored 4-1 and collected \$200. Top under 1300 was claimed by Frank Johnson (1270) who scored 3½-1½ and collected \$200.

The Top Class "E" title was won on tie-break by Steve Sigmon (1093) over Miklos Kiss (1198) and Randy Shirley (1096) each scoring 4-1 and winning \$200. The under 1100 honors went to Jeffery Moore (982) who scored 3½-1½ and claimed \$200. Special thanks to NCCA Secretary/Treasurer Pat Hoekstra for tediously

Continued on page 2, games from the NC Open on page 7-9

NCCA Officer list

President:

Neal D. Harris
Rte. 2 Box 234
Old Fort, NC 28762
(828)668-7185
rajkipling@yahoo.com

1st Vice-President:

Leland Fuerstman
4225 Carmel Forest Rd.
Charlotte, NC 28226
(704)552-5656
lelandf@juno.com

2nd Vice-President

Jill Bambara
P.O.Box 9777
Charlotte, NC 28299
j.bambara@cms.k12.nc.us

Secretary/Treasurer

Pat Hoekstra
5404 Crosshill Ct.
Charlotte, NC 28277
(704)846-8837
phoekstra@ix.netcom.com

Gambit editor

Jeffrey Jones
313-C Roselle Ct.
Raleigh, NC 27610
(919)250-9717
jeffjones@chessunion.com

Website editor

Kevin Hyde
RR 1 Box 35A
Saluda, NC 28773
(828)749-1625
hyde@a-o.com

Games editor

vacant

Gambit mission statement

As the official quarterly publication of the North Carolina Chess Association, the mission of the *Carolina Gambit* is threefold: to provide up-to-date news and information about past, present, and future tournament activities; to provide a forum for the analysis of games and the discussion of issues that are important to the members; and to promote and encourage the growth and development of local club activity throughout the state.

In Memory of Terry Due Brown

Terry Due Brown, age 51, of Charlotte, died Saturday, July 21, 2001. He was born November 5, 1949 in Cincinnati, Ohio, son of the late Ernest and Nancy Brown.

Terry was a graduate of Dartmouth University, and later received his Juris Doctorate from UNC Chapel Hill. His legal career included working in the Mecklenberg County, and Cleveland County District Attorneys offices, and several private law firms. He also taught Business Law at CPCC.

He was well known in the chess community for his leadership in the Chess Clubs at Rama Road Elementary and McClintock Middle School. He was past president of the Charlotte-Mecklenberg Scholastic Chess Association.

Mr. Brown is survived by his wife, Sally Starr Brown, his daughter, Brittany, and son Brandon, all of the home; a brother, William 'Bill' Brown and his wife, Katie of Charlotte, and three nephews.

In lieu of flowers, contributions may be made to the National Parkinson's Foundation, 1501 Northwest 9th Avenue, Miami, FL 33131, or the American Heart Association, 1229 Greenwood Cliff, Suite 109, Charlotte, NC 28204, or to an educational fund for the Brown children.

Information courtesy of the Charlotte Observer, 26 July, 2001

Continued from page 1

processing late entries and to NCCA President Neal Harris for his continued attention and encouragement. And a very special thank you for the superb work provided by Pairing Director Rob Morse and Assistant Director Bill Nash (neither of whom were compensated for the event). (Fuerstman directed).

Deadline for the next Gambit!

December 24th, 2001

Next issue to be released.

January 1st, 2002

What's in this issue?

Pg.3 Lipkin-Pfefferkorn open
Pg.4 Correspondence Corner
Pg.4 Bowling Alley Tournaments
Pg.5 NC Tournaments Oct. - Dec. 2001
Pg.6 Training Games
Pg.7-9 GAMES!!!!
Pg.11 NC Club Directory

The 28th annual Lipkin-Pfefferkorn Open.

26-28 July, 2001

205 players walked into the Comfort Inn in Burlington on a dreary weekend for the 28th edition of the Lipkin-Pfefferkorn Open. \$11,090 in total prizes were divvied out over six sections.

In the open section Penn State University student FM Stanislav Kriventsov kept his momentum from a strong World Open going with a four point score, taking clear first. Kriventsov opened the tournament with wins over NMs Boris Reichstein and David Vest in the first two rounds. Rounds three and four saw Kriventsov battle a couple of IMs: Carlos Perdomo and Larry Kaufman to draws. "Stas" then finished the triumph with a win over FM Ilye Figler.

Following Kriventsov in a tie for second were Perdomo and NM Yevgeniy Gershev with 3½ points each. Kaufman and Figler and Vest were joined by IM Oladapo Adu for fourth through seventh with three points.

Kevin Kirby of Cary took clear first in the under 2200 section with four points. Kirby opened by defeating Chris Sevilá and Frank Johnson before being knicked for a draw by former Virginia state champion Rodney Flores. Kirby then ripped Alexander Kvit before a final round draw with Alan Patrick gave him first place.

Patrick and Johnson were tied for second with 3½ points to tie for second. Flores, Raymond Kaufman and Bernie Schmidt all shared fourth with three points.

The under 2000 section was the only one without a clear winner as Robert Spurrier, David Erb, Terry Newman, and Robert Walker all tied for first with four points each. Spurrier crashed through the gate with four consecutive wins beating Shawn McIntosh, Jon Morris, Newman, and Thomas Adams.

Erb however derailed the "Spurrier Express" in round five to claim his share of first. Erb defeated Gary Branton in the first round, Walker in the second, and drew Ronnie Sands in the third before a half-point bye in round four.

Newman beat Robert Moore and Paul King before his loss to Spurrier. He then upended U.S. Amateur South champion Gary Newsom and finally Alfred Hurd.

Walker knocked off Hurd in the first round before his loss to Erb. He heated up and throttled Donald Hofer, Tony Magee, and Adams over the last three rounds for his claim of first.

Matthew Rosen, Patrick McCartney, and Tom Waymouth claimed fifth through seventh with 3½.

Michael Curcuru lost his first game but re-entered and blew through the under 1800 section for clear first with 4½ points. After dropping his game to Paul Lucas on Friday night, Curcuru re-opened his tournament with successive wins over Mario Mercado and Diego Ubiera before avenging his loss to Lucas in round three. He then defeated Ted Udelson before drawing Joe Faries in the final round for a half-point lead at the end.

Five players including Udelson, James Kelley, Jeffrey Jones, Lee Zinzow, and Joe Faries tied for second with four points.

The under 1400 section was by far and away the largest in the tournament with 60 entries. Jesse Eddleman was the only player who survived the tournament unscathed scoring a perfect five out of five. Eddleman took out Euphemia Mu, Nick

Bambara, Ryan Fitzgerald, John Wehrenberg, and Bob Halliday to claim the section's top prize. John Luisana and Milton Kicklighter were also perfect heading into the final round but drew each other to finish in second through fourth with Robert Botelho. Bruce Hanks, Euphemia Mu and Todd Metter scored four points each for a share of fifth through seventh.

Finally John O'Dowd won the round-robin unrated section with 4½. Ronnie Ray, who drew O'Dowd finished second.

Here is the only game I received from the LPO:

2001 Lipkin-Pfefferkorn Open

♔ Al Carlson (1409)

♚ Mark Schulz (1550)

Burlington, NC

29 July, 2001

Notes by Al Carlson and Fritz 6.0 (30s)

1.Nf3 f6 2.g3 Kf7 Angus Dunnington's comment on the game S. Williams - Simons in the 1999 British Championship, which as a result of a bet began with white playing 1.f3 2.Kf2 may be appropriate; "...can be quite insulting to the opponent. Having said that, Williams skillfully demonstrates that talent and a good positional understanding can produce a reasonable game even from an ostensibly ridiculous opening." For quite awhile I felt black was such a competitor, and doubted I was up to the task. Bill Simpson, later, said he has seen this referred to as the NUT opening. One you have to crack ed. - I've also seen it called the Fried Fox opening. Why anyone would want to fry a fox I don't know, but I'm sure you'd have to be crazy to want to. 3.Bg2 c5 4.O-O d5 5.d3 Nc6 6.Nbd2 e5 Black should quickly conclude development. 7.c4 d4 8.Ne4 Be7 9.e3 [Re1 f5 10. Neg5+ Ke8=] h5 [9...f5!? Would allow Black to play on 10.Ned2 dxe3 11.fxe3 Qxd3] 10.exd4 cxd4 11.Qb3 b6 controls c5 [11...g5 12. h4] 12.Nfd2 Now, of course, the other knight has no escape square. It was mostly luck that its move would uncover an attack on an unprotected Knight. [12.Nh4 Na5 13.Qd1 g5 14.Nxg5+ fxe5 15.Qf3+ Ke8 16.Qxa8 gxe4] f5 [12...Qc7] 13.Qb5 [13.Nd6! Bxd6 14.Bxc6] Bd7 [13...fxe4? Is nothing because of 14.Qxc6 Bf5 15.Nxe4+-] 14.Ng5+ Kg6?? [14...Bxg5 was much better 15.Bxc6 Bxc6 16.Qxc6 Bxd2 17. Bxd2 Nf6=] 15.Bxc6 a6 [15...Bxg5 hardly improves anything 16. Bxd7 Bxd2 17.Bxd2+-] 16.Qxe5 Bxg5 17.Qd6+ [17.Bxa8!? Makes it even easier for white 17...Qxa8 18.Qd6+ Nf6+-] Nf6 18.Nf3 [18.Bxa8 and White wins 18...Bxd2 19.Bxd2 Qxa8 f3 +- (20.Qxb3 is much worse 20...Qf3)] Bxc6 19.Ne5+ Kh7 20.Qxd8 [20.Qxc6 Bxc1 21. Raxc1+-] Bxc1?? [Solves nothing [20...Rhxd8 21.Bxg5 Rd6] 21.Qxd4 [21.Nxc6?! Is not possible 21. Rhxd8 22.Nxd8 Bxb2+-; 21.Qxb6 is impossible 21...Rhxb8 22.Qxc6 Bxb2+-] Rhd8 22.Qxb6 Nd7 23.Nxd7 Bxd7 24.Raxc1 Rab8 25.Qxa6 Rxb2 26.Rb1 Rxb1 27.Rxb1 Bc8 28. Qa5 Bd7 29.Qxd8 1-0

Patzer's Puzzlers Contest:

Unfortunately I received no valid entries for the Patzer's Puzzler contest. I probably will no longer do any more Patzer's Puzzlers for the Gambit unless someone wants to submit one in the future

Correspondence Corner

Jeff Jones

This summer I received a mailing list of all the players who are USCF members (as of early August) to advertise some tournament I had coming up. Since I had a little free time and quite a bit of curiosity I looked at correspondence ratings. Here's what I found:

USCF members in NC: 1725

Members in NC w/ corr. Ratings: 171 (9.9%)

My rank amongst those players: 162 :(

Average rating: 1676.77

High rating: 2428

Low rating: 416

Players by class: SM=1 M=8 X=23 A=35 B=36
C=38 D=21 E=6 F=4 G=1 H=1

TOP PLAYERS

#	Player	Hometown	Rating
1.	Leszek Mazur	Chapel Hill	2428
2.	Michael Chapla	Candler	2374
3.	Joseph H Crump II	Siler City	2317
4.	Martin K Roper	Chapel Hill	2295
5.	Derek K Womble	Greensboro	2288
6.	Doug Bartenfeld Jr.	Sophia	2284
7.	Patrick McCartney	Charlotte	2269
8.	Lysle Kevin Lewis	Durham	2224
9.	Dana D Daves	Raleigh	2209
10.	Richard C Piper	Whispering Pines	2193
11.	Mark J Sturman	Matthews	2190
12.	David J Deininger	Pittsboro	2173
13.	Randy C Lovelace	Taylorsville	2161
14.	Mark D Heavlin	Spruce Pine	2131
15.	Michael A Buaiz	Louisburg	2130
16t.	John M Kirby	Raleigh	2115
16t.	David F Marples	Durham	2115
18.	David M. Haimes	High Point	2103
19.	Roger L Sample	New Bern	2102
20.	Neal D. Harris	Old Fort	2097
21.	Arthur L. Allen	Raleigh	2090
22.	Martin van Lith	Pittsboro	2079
23.	Joseph Quinlan	Asheville	2063
24.	Curtis Adrian Graham	Raleigh	2060
25.	Terry W. Newman	Tarboro	2050
26.	Gregory C Risk	New Bern	2045
27.	Stephen G. Morgan	Leicester	2031
28.	Gary D. Newsom	Cornelius	2027
29.	Matthew J. Rave	Sylva	2023
30.	Ronnie S. Sands	Greensboro	2013
31.	John W. Wright	Monroe	2004
32.	John Yates	Butner	2003
33.	Robert Muhl	Gastonia	1984
34.	Robert R. Fentress, Jr.	Winston-Salem	1980
35.	Kevin A Kirby	Cary	1962
36.	Ralph S. Lombard	Charlotte	1961
37.	Steven Wilson Sigmon	Rutherford College	1952
38.	Paul H. Cox	Brevard	1949
39.	William R. Thompson	Raleigh	1947
40.	Roselie Estey	Black Mountain	1941

"Bowling Alley" Tournaments Roll Trough the Summer With Increased Turnouts

Jeff Jones

July and August saw more and more players discover the chess tournaments at Rainbow Lanes in Clayton. On July 21st 34 players gathered for Pin Action III. The field was divided into three sections.

In the open section Henderson expert John Smithwick was drawn by 14-year-old Nelson Lopez of Youngsville in the second round. Both won their other three games to tie for first in the 14 player section.

A newcomer from Columbia, SC claimed the top prize in the under 1400 section. 14-year-old Sam Copeland, playing in his first rated tournament, won all four of his games. 11-year-old Nisha George of Raleigh and 16-year-old Chris Thomas of Durham shared second with three points.

Sam's brother Paul and Raleigh's Christopher Channeli dominated the junior-u800 section with 3½ points each.

The big event of the summer in Clayton occurred August 25th, 2001. The 2nd Upper Neuse Open drew a Clayton-record 54 players in three sections.

Florida master Nicholas Schoonmaker was visiting friends in the area and decided to check out the tournament. He then ran through the first three rounds unblemished before taking a draw with Durham's Edward Mason to take clear first place. Mason, who also drew NM Greg Samsa in round 2 finished in a three-way tie for second with Bob Cohen of Cary, and Nelson Lopez of Youngsville. All three scored three points.

The under 1600 championship was claimed by Shawn George who scored 3½ points. Only Paul Hughes was able to nick him for a second round draw. Borders tournament organizer Leo Cabana of Cary joined Charles Yu of Chapel Hill and Thomas Payne of Linden in a three way tie for second with three points.

The largest section was the junior section. Unlike the other sections which were played as a four-round game/60. The junior section was a grueling six-round game/30. Ben George ran out to a big lead early in the tournament and held on to draw his last two games to take first place with five points. Chapel Hill's Jay Goss lost the tie-break, but was the only one to win five games in the tournament. Garner's Daniel Faries, who broke Ben George's win streak with a cunning stalemate, and Adam Holmes, who handed Ben his other draw, shared third with 4½.

Upper Neuse Open II

♔ NM Nicholas Schoonmaker (2204)

♔ Bob Cohen (1991)

Clayton, NC

25 August, 2001

1.d4 Nf6 2.c4 g6 3.Nc3 d6 4.e4 Bg7 5.Nge2 O-O 6.Ng3 c5 7.d5 Nbd7 8.f4 Re8 9.Bd3 Nb6 10.O-O e6 11.h3 exd5 12.exd5 Bd7 13.a4 Qc7 14.f5 a5 15.Bg5 Rf8 16.Qd2 Rae8 17.b3 Nc8 18.Rf3 Ne7 19.fxg6 fxg6 20.Raf1 Nf5 21.Nxf5 Bxf5 22.Bxf5 gxf5 23.Rxf5 Nh5 24.Rxf8+ Bxf8 25.Qd1 Bg7 26.Qxh5 Qd7 27.Nb5 Re5 28.Qh4 Re2 29.Bf6 Re3 30.Bxg7 1-0

North Carolina Chess Tournaments: Oct. - Dec. 2001

October 5-6	Saluda
Bethany's Birthday Grand Prix Chess 4-SS 40/75 G/15 30 sec/move added (SD/120 without capable digital clock) Rounds: Fri. 8PM, Sat. 9AM-1:30PM-6PM See page ? For more details. http://www.ioa.com/~hyde/BethGP01.htm	
October 13	Charlotte
Scholastic Team Chess Tournament Smithfield Elementary School, 3200 Smithfield Church Rd. (Smithfield Ch. Rd. intersects Park Rd. near So. Meck. High School) EF: \$50/school. Info: Rob Morse (704)849-2575	
October 19	Raleigh
Raleigh Chess Club October G/10 (QC) Kiwanis Park, Raleigh, NC. 5-SS G/10 start at 8PM. EF:\$5. Prizes: 30%-15%-10% + class prizes. Info: Jeff Jones (919)250-9717 or Nita Witting, looking@mindspring.com . http://members.aol.com/RabidRook/RCCOctG10.htm	
October 26-28	Raleigh
2001 Carolinas Open FIDE-rated Championship section: 5-SS 40/2 G/1. Amateur section: 6-SS 35/80 G/60. Holiday Inn, 2805 Highwoods Blvd., Raleigh, NC 27604 (919)872-3500. See back cover for details. http://www.members.aol.com/RabidRook/2001CarolinasOpen.html	
Nov. 3, 2001	Clayton
Pin Action V 4-SS G/30 Rainbow Lanes FFC, 850 NC 42 W, Clayton, NC 27520, (919)553-4386. Sections: Open, U1400 EF:\$10 Prizes b/entries. Reg.: 2-3 Rds.:3-4-5-6. Pairings accelerated after 20 players. Info: Jeff Jones, (919)250-9717, jeffjones@chessunion.com . http://members.aol.com/RabidRook/PinAction.html for prize table.	
Nov. 3, 2001	Charlotte
Fake Copper Blanket IX Dowd YMCA (formerly Central), 400 E. Moorhead St., Charlotte, NC 28202 (Near Tryon St.) 4-SS G/60. Sections: Open, U1800, U1400, U1200, U1000 (trophy only).EF: \$15 (by 10/31) / \$20 at site for top four sections. \$8/13 for U1000. Prizes: \$75-\$30-\$15 in each of the top four sections. Trophies to 1st-10th, top u750, unrated in U1000. ENT: CMSCA, 3617 Manor House Dr., Charlotte, NC 28270. Info: Rob Morse (704) 849-2575	
Nov. 10, 2001	Charlotte
Scholastic Team Chess Tournament Info: Rob Morse (704)849-2575	
Nov. 17, 2001	Hendersonville
Henderson County Fall Team Chess Challenge Info: Kevin Hyde (828)749-1625 hyde@a-o.com	
Dec. 8-9, 2001	Charlotte
14th Annual Southern Scholastics Info: Rob Morse (704)849-2575	
Second Saturday of each month	Cary
Borders Chess Club unrated tournaments 4-SS G/20 on club ratings. EF: \$5 100%. Website: http://www.BordersChess.org . TD: Leo Cabana, BorderChess@hotmail.com	

Training Games

FIDE master Robin Cunningham

Training Game

♔ Mark Smith-Soto
♚ FM Robin Cunningham
Greensboro, NC
August, 2001
Notes by Robin Cunningham

For one reason or another, we all undergo periods when it is difficult for us to get to as many tournaments as we would like. When this is the case, it is convenient to have a good sparring partner around who is willing to mix it up in a training game. I find these games most useful when they are played under tournament conditions and it is understood that no quarter will be given! The following is one of those training games with Mark Smith-Soto, Greensboro's only chessplayer-poet-Spanish profesor.

Although this game was not played 'for rating points', I hope you will agree that there are lessons to be learned from it. 1.f4 d5 2.Nf3 g6 3.e3 Bg7 4.d4 I am not sure why the Stonewall is not more popular. That probably reflects my lack of understanding about this particular opening! c5 5.c3 Nd7 6.Be2 6.Bd3 is probably better to get more control over e4. Nh6 7.b3 0-0 8.0-0 b6 9.a4?! I am not sure what this is supposed to accomplish. Bb7 10.Na3 a6? Not such a good move. I decided that White was planning to put a knight on b5 and so I stopped it. As a result, I have unnecessarily produced a target on a6 and wasted a move I should have spent on Nf5, of Nf6 to get firm control over e4.

If the knight comes to b5, I can always kick it free. 11.Bd3 Preparing to line up on a6. Qc7 12.Qe2 Nf6 Possibly, I should have bitten the bullet and risked a ruptured pawn structure after 12...Nf5 13.Bf5 gxf5. As long as no calamity befalls my king, my pieces should be at least as well-placed as White's. 13.Bb2 Ne4 14.Ng5! The first good move of the game. The game has been totally mediocre up to this point but now it starts getting good! 14...Nxf3 loses a pawn; so I thought I should take this opportunity to centralize the h6-knight. Nf5 15.Bxe4 dxe4 16.g4 Nh4 17.Qf2 Nf3+ 18.Nxf3 exf3 The position has become a genuine battle of ideas. White hopes to simply round up the f3-pawn. Meanwhile, Black has to drum up sufficient play to compensate for its loss. We both headed for this position so clearly some differing evaluations were involved. I felt secure in my assessment that if the pawn on f3 disappears, the open lines, two bishops, and loose white king would be ample compensation. My opponent had other ideas. 19.Nc4 Rac8 I don't know about you, but I find that whichever rook I move to an open (or soon to be open) file, it turns out to be the wrong one. Rfc8 is better, because when Black plays b5, the a-file is likely to open as well. In general, I might be better off if I begin choosing at random which rook to move. 20.Rac1 b5 21.axb5 axb5 22.Nd2 cxd4 23.cxd4 Qd7 24.h3 White is the first to move all 8 pawns! If my rook were on a8 instead of f8, I would know what to do now. Qe6 I had originally intended 24...h5 but 25.Qg3! Qe6 26.Kf2 hxg4 27.hxg4 f5 28.g5 didn't look promising to me. I definitely misassessed this position as 28...Rc1 29.Rc1 Ra8 looks better for Black, since White's queen is offside. After the move played in the game, white takes the upper hand. 25.Kh2 Rxc1 26.Rxc1 Rc8? I can't explain why I thought this would be better than the obvious 26...Ra8. I guess I thought this was the way to activate my queen on the c-file, but White can just play the obvious 27.Rc8 Rc8 28.Ba3 e6 29.Bc5 as Mark pointed out after the game. 27.Rc3 Rxc3 28.Bxc3 Bd5 29.Bb4 Bf8 30.Bc5 Another important point in the game that reveals something about both of the players. Mark often sets a small trap while going about his

positional aims. Robin often falls into them! I have to be more careful. I played the following blunder because everything so far has appeared to be a perfectly natural consequence of the preceding play. Always be careful! Slight paranoia is a chess asset! Bxb3?? Diagram TG-1 31.f5 Ugggh! Black must lose a piece. There are two ways to respond to this type of unfortunate event.

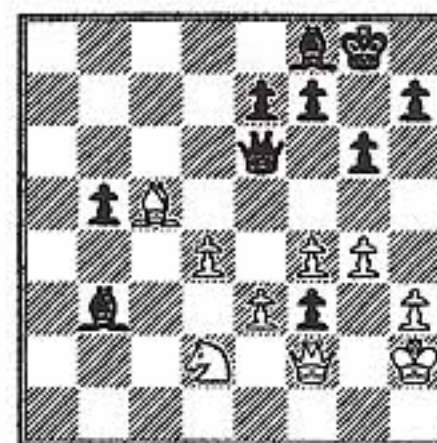


Diagram TG-1

You can become dejected and begin playing mechanically, or you can begin thinking about how to make life difficult for your opponent. I am embarrassed to say it, but I have become so practiced at playing in lost positions that I don't even much mind it anymore! The key is to keep finding good moves and presenting your opponent with problems. Qd5 32.e4 Qb7 33.Nxb3 Qxe4 34.f5g6?? Mark relaxes with this perfectly natural move (one of the things Mark has figured out in our series of training games is that he needs to be less merciful in finishing off won positions). More natural was 34.Nd2 Qf4 35. Kg1 gxf5 36.gxf5 Qxf5 37.Qf3 38.Nf3 when Black still has a chance to cause problems due to his widely separated passed pawns. Still, White is very likely to win this position. Bh6! Imagine if I had resigned earlier and missed the chance to play this move! White is in real trouble now, but notice that Mark doesn't give up. He begins setting problems of his own so that Black has a chance to blow it in the time scramble. 35.gxh7+ Kxh7 36.Na1 Diagram TG-2 My first reaction to this was "Oh, he's giving up", but... Bf4+ 37.Kh1 Kg8

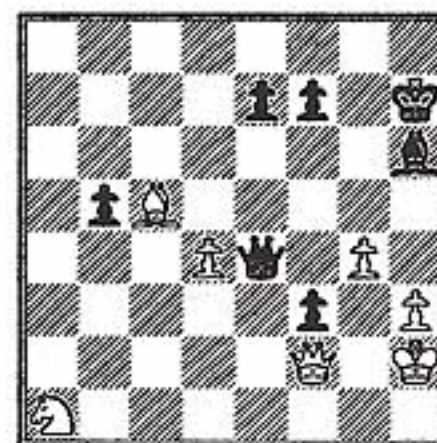


Diagram TG-2

Avoiding the point of White's strange 36th move. If 37... Be3, then 38.Qc2 might win due to the pin on the Black queen. Luckily I had already fallen into one trap this game, so I was being careful. 38.Nb3 The last trap: 38...Bg3? 39.Nd2! Qb1+ 39.Qg1 Qxb3 40.Bxe7 f2! That pawn has had a good life! 41.Qxf2 Qxh3+ 42.Kg1 Be3 Not exactly a work of art, but a very interesting game, all the same 0-1

New editor needed for 2002!!

Jeff Jones

As many of you know by now I am going to be stepping down as Gambit editor effective after the release of the Winter 2002 issue of the Gambit. I'm feeling quite a bit burned out from all of the activities I've been involved in and just need a break. I will be more than happy to provide guidance and some material. I would encourage anyone who is interested to contact me so that we can work on the winter Gambit together. I would like to thank those who have contributed over the last three years and encourage you to do so for the next few as well.

Sincerely,

Games

2001 North Carolina Closed

♙ Harold Mouzon (2190)

♙ IM Jonathan Schroer (2457)

Charlotte, NC

September, 2001

1.e4 c5 2.Nf3 d6 3.d4 cxd4 4.Nxd4
Nf6 5.Nc3 a6 6.Bg5 e6 7.f4 Qb6 8.Qd2
Qxb2 9.Rb1 Qa3 10.f5 Nc6 11.fxe6
fxe6 12.Nxc6 bxc6 13.e5 Nd5 14.Nxd5
cxd5 15.Be2 dxe5 16.O-O Ra7 17.Rb8
Qc5+ 18.Kh1 Bd6 19.Rb3 Rc7 20.Rb8
Rf7 21.Ra8 Rxf1+ 22.Bxf1 O-O 23.
Bd3 e4 24.Be2 d4 25.Bh4 e3 26.Qd3
Qb4 0-1

2001 North Carolina Closed

♙ IM Jonathan Schroer (2457)

♙ Matthew Hoekstra (2306)

Charlotte, NC

September, 2001

1.d4 Nf6 2.c4 e6 3.Nf3 d5 4.Nc3 Bb4
5.Bg5 dxc4 6.e4 c5 7.Bxc4 cxd4 8.
Nxd4 Qa5 9.Bb5+ Bd7 10.Bxf6 gxf6
11.O-O Bxc3 12.Bxd7+ Nxd7 13.bxc3
Qxc3 14.Qa4 Rg8 15.Rfd1 Rd8 16.
Rac1 Qh3 17.g3 Qg4 18.Nb5 Rg5 19.
Nc7+ Ke7 20.Rxd7+ Rxd7 21.Qa3+
Rd6 22.Ne8 Qf4 23.Nxd6 Kd7 24.Rd1
Qf3 25.Qxf3 1-0

2001 North Carolina Closed

♙ Steve Tisinger (2065)

♙ Matthew Hoekstra (2306)

Charlotte, NC

September, 2001

1.e4 g6 2.d4 Bg7 3.Nc3 c5 4.dxc5
Bxc3+ 5.bxc3 Qa5 6.Bd3 Qxc3+ 7.Bd2
Qxc5 8.Nf3 d6 9.Rb1 Qc7 10.Rb3 Nf6
11.h4 Bg4 12.Qb1 b6 13.Rc3 Qb7 14.
Qb5+ Bd7 15.Qb2 Nc6 16.h5 gxh5 17.
Rc4 Rg8 18.Bg5 Ne5 19.Nxe5 Rxc5
20.Nxd7 Kxd7 21.f4 Rxc2 22.Qb5+
Kd8 23.Rxh5 Nxh5 24.Qxh5 Rc8 25.
Qxf7 Rxc4 26.Qf8+ Kd7 27.Qf5+ Kc7
28.Bxc4 Qc6 29.Qe6 Kd8 30.c3 Qc5
31.Be2 Qf2+ 0-1



2001 North Carolina Closed

♙ Garrick Wells (2097)

♙ Larry Tapper (2290)

Charlotte, NC

September, 2001

1.c4 e5 2.Nc3 Nf6 3.e3 Bb4 4.Nge2 O-O
5.a3 Bxc3 6.Nxc3 d5 7.cxd5 Nxd5 8.Qc2
Nc6 9.b4 Nxc3 10.Qxc3 Re8 11.Bb2 Qf6
12.Bb5 Qg6 13.Bxc6 bxc6 14.Kf1 Ba6+
15.Kg1 Rad8 16.f3 Qd6 17.Bc1 Qh6 18.
Kf2 Rd6 19.Qc5 Rg6 20.Bb2 e4 21.Qxa7
exf3 22.g3 Qh3 23.Rag1 Bf1 24.Qd4
Bg2 25.Qh4 Qf5 26.Rxc2 fxc2+ 27.
Kxc2 Rg4 28.Qh3 Qe4+ 29.Kf2 Rg5 30.
Rf1 Qd5 31.Bc3 Ra8 32.Ra1 Rf5+ 33.
Ke2 Qf3+ 34.Kd3 c5 35.bxc5 Qd5+ 36.
Kc2 Qe4+ 37.Kd1 Rxc5 38.Qd7 Rxc3
39.dxc3 Qh1+ 40.Kd2 Qxa1 0-1

2001 North Carolina Closed

♙ Frankie Newton (2190)

♙ Gary Newsom (2045)

Charlotte, NC

September, 2001

1.d4 Nf6 2.Nf3 g6 3.Bf4 Bg7 4.e3 d6 5.
h3 O-O 6.Be2 Nbd7 7.O-O c5 8.c3 b6 9.
Nbd2 Bb7 10.Qb3 Rc8 11.Rfd1 Qc7 12.
Bh2 cxd4 13.exd4 e5 14.Qa3 Nh5 15.g4
Nf4 16.Bxf4 exf4 17.Ba6 Bxa6 18.Qxa6
f5 19.g5 h6 20.Re1 Rfe8 21.Re2 Nb8 22.
Qd3 Nc6 23.Rae1 Qd7 24.Qb5 Rxe2 25.
Rxe2 Kf8 26.Qd5 Ne7 27.Qe6 Qxe6 28.
Rxe6 Rc6 29.c4 d5 30.Rxc6 Nxc6 31.
cxd5 Nxd4 32.Nxd4 Bxd4 33.gxh6 Bxb2
34.Nc4 Bf6 35.Kg2 Bg5 36.h7 Bf6 37.
Kf3 g5 38.Nd6 Kg7 39.Ne8+ 1-0

2001 North Carolina Closed

♙ Frankie Newton (2190)

♙ Mike Buaiz (2093)

Charlotte, NC

September, 2001

1.d4 d5 2.Nf3 c6 3.Bf4 Bf5 4.e3 e6 5.c4 Bxb1
6.Rxb1 Qa5+ 7.Nd2 Nf6 8.a3 dxc4 9.Bxc4
Nd5 10.Bg3 Nb6 11.Bd3 Be7 12.O-O N8d7
13.Qe2 O-O 14.b4 Qg5 15.e4 Rfe8 16.f4
Qh6 17.Nb3 f5 18.Nc5 Rab8 19.exf5 Bxc5
20.bxc5 exf5 21.Qd2 Nd5 22.Bxf5 N7f6 23.
Rfe1 Kf7 24.Rxe8 Nxe8 25.Be4 Nef6 26.
Bxd5+ Nxd5 27.Qd3 b5 28.cxb6 Rxb6 29.
Rxb6 axb6 30.Qf5+ Qf6 31.Qxf6+ Nxf6 32.
Kf2 Ne4+ 33.Ke3 Nd6 34.Kd3 Ke7 35.Be1
Ke6 36.Bb4 Nf5 37.Ke4 g6 38.g4 Ng7 39.
Bf8 Ne8 40.f5+ Kf7 41.Bb4 gxf5+ 42.Kxf5
Nc7 43.Ke5 Ne8 44.h3 Kg6 45.Ke6 Nc7+
46.Kd7 Nb5 47.Kxc6 Nxd4+ 48.Kxb6 h5 49.
gxh5+ Kxh5 50.a4 Nb3 1-0

2001 North Carolina Closed

♙ Paul King (1828)

♙ Thomas Adams (1825)

Charlotte, NC

September, 2001

1.d4 Nf6 2.c4 e6 3.Nc3 Bb4 4.Qc2 c5 5.e3
Nc6 6.Nf3 cxd4 7.exd4 d5 8.a3 Bxc3+ 9.
bxc3 O-O 10.Bg5 Re8 11.Be2 dxc4 12.
Ne5 Nxd4 13.Qd2 Nxe2 14.Qxe2 Qa5 15.
O-O Nd5 16.Nxf7 Kxf7 17.Qh5+ Kf8 18.
Qxh7 Ne7 19.Bxe7+ Rxe7 20.Qh8+ Kf7
21.Rae1 Re8 22.Qh4 Bd7 23.Re3 Bc6 24.
Rg3 Rad8 25.Qh7 Qe5 26.f4 Qf6 27.f5
Rh8 28.Rxc7+ Qxc7 29.fxe6+ Kxe6 30.
Qxc7 Rdc8 31.Rf6+ Kd5 32.Rf5+ Kd6
33.Qe5+ Kd7 34.Rf7+ 1-0

2001 North Carolina Closed

♙ Ken Baxter (1922)

♙ Jacqueline Guglielmi (1705)

Charlotte, NC

September, 2001

1.Nf3 d5 2.d4 Nf6 3.c4 b6 4.Nc3 Bb7 5.
Bf4 c6 6.e3 Nbd7 7.Rc1 Nh5 8.Bg5 h6 9.
Bh4 g5 10.Bg3 Nxc3 11.hxc3 Bg7 12.Bd3
dxc4 13.Bxc4 e6 14.b4 Qe7 15.Qb3 g4 16.
Nh4 Bf6 17.Kf1 Bg5 18.Ne2 Nf6 19.Nf4
Bxh4 20.Rxh4 h5 21.Bxe6 Ne4 22.Qd3
Nd6 23.Bxg4 a5 24.b5 Nxb5 25.Bxh5 Ba6
26.Bxf7+ Kxf7 27.Qg6+ 1-0

2001 North Carolina Closed

♙ Marnzell Hand (1609)

♙ Mike Lipkin (1616)

Charlotte, NC

September, 2001

1.e4 c5 2.d4 cxd4 3.c3 dxc3 4.Nxc3 Nc6 5.
Nf3 d6 6.Bc4 e6 7.O-O Be7 8.Qe2 a6 9.a3
Nf6 10.Rd1 Qc7 11.Bg5 O-O 12.Rac1
Qb8 13.Bb3 h6 14.Bh4 g5 15.Bg3 Nh5 16.
Bc2 Nxc3 17.hxc3 Bf6 18.Qd3 Be5 19.
Nxe5 dxe5 20.Qf3 Kg7 21.Rd2 Nd4 22.
Qd1 b5 23.Ne2 Nxc2 24.Qxc2 Ra7 25.b4
Bd7 26.Qd1 Qe8 27.Rd6 Qe7 28.Rc5 f6
29.Rb6 Rc8 30.Rd6 Rxc5 31.bxc5 Bc8 32.
c6 Rc7 33.f4 exf4 34.gxf4 Qe8 35.fxc5
hxc5 36.Rd8 Qxc6 37.Kh2 Rd7 38.Rxd7+
Qxd7 39.Qxd7+ Bxd7 40.Nd4 Kf7
0-1



2001 North Carolina Closed

♔ Dan Garrett (1580)
♚ Marnzell Hand (1609)
Charlotte, NC
September, 2001

1.d4 Nf6 2.Nf3 g6 3.Nc3 Bg7 4.e4 d6 5.
Bf4 O-O 6.Qd2 Bg4 7.Be2 c6 8.h3 Bxf3 9.
Bxf3 Nbd7 10.Bh6 Nb6 11.Be2 e6 12.h4
d5 13.h5 Nxe4 14.Nxe4 dxe4 15.Bxg7
Kxg7 16.hxg6 h5 17.gxf7 Qf6 18.Bxh5
Nc4 19.Qc3 Nd6 20.Qg3+ 1-0

2001 North Carolina Closed

♔ David Griffin (1661)
♚ Tom Brown (1531)
Charlotte, NC
September, 2001

1.e4 d6 2.Nf3 g6 3.d3 Bg7 4.g3 Nf6 5.Bg2
c5 6.O-O Nc6 7.Nbd2 O-O 8.c3 Rb8 9.a4
Bg4 10.Nc4 Qd7 11.Ne3 Bxf3 12.Bxf3 b5
13.axb5 Rxb5 14.Ra6 Ra5 15.Rxc6 Qxc6
16.e5 Qc7 17.exf6 Bxf6 18.Nd5 Qb8 19.
Nxf6+ exf6 20.Bd5 Rb5 21.b3 Kg7 22.d4
Rd8 23.Be3 Qc7 24.Qf3 h5 25.h4 Qc8 26.
Qf4 Qf5 27.Qh6+ Kg8 28.c4 Rxb3 29.Re1
Rb1 30.Bxf7+ Diagram NCC-1
Kxf7 31.Qh7+ Ke6 32.Bc1+ 1-0

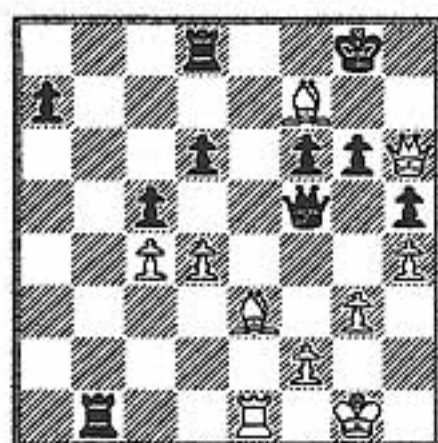


Diagram NCC-1

2001 North Carolina Closed

♔ Melvin Lyles (1564)
♚ David Griffin (1661)
Charlotte, NC
September, 2001

1.d4 e6 2.c4 Nf6 3.g3 d5 4.Nf3 c6 5.Nbd2
b5 6.cxd5 cxd5 7.Bg2 Bb7 8.O-O Nbd7 9.
b3 Bd6 10.Bb2 O-O 11.Rc1 Qe7 12.e3
Rfc8 13.Qe2 a6 14.Ne5 Ba3 15.Bxa3 Qxa3
16.Nb1 Qxc1 17.Rxc1 Rxc1+ 18.Bf1 Rxb1
19.Qc2 Rxf1+ 20.Kxf1 Rc8 21.Qd2 Nxe5
22.dxe5 Ne4 23.Qb2 Nc3 24.a3 a5 25.b4
a4 26.Qd2 Rc4 27.f3 h6 28.g4 d4 29.e4
Kf8 30.g5 Bxe4 31.gxh6 Bg6 32.hxg7+
Kxg7 33.Qg5 d3 34.f4 Ne4 35.Qg4 Rc1+
36.Kg2 d2 37.f5 d1=Q 38.Qxd1 Rxd1 39.

fxg6 Rd3 40.gxf7 Rxa3 0-1

2001 North Carolina Closed

♔ Paul Calloway (1630)
♚ James Kelley (1755)
Charlotte, NC
September, 2001

1.e4 c5 2.d4 cxd4 3.c3 d3 4.Bxd3 Nc6
5.Nf3 g6 6.Na3 Bg7 7.O-O d6 8.h3
Nf6 9.Nb5 Nd7 10.Be3 O-O 11.Nbd4
Nxd4 12.cxd4 b6 13.Qd2 Bb7 14.Bh6
e6 15.Bxg7 Kxg7 16.Rac1 f5 17.Ng5
Re8 18.d5 Nf8 19.dxe6 fxe4 20.Bb5
Nxe6 21.Bxe8 Nxe5 22.Qd4+ Kh6 23.
Bc6 Ba6 24.Rfd1 Nf3+ 25.gxf3 Qg5+
26.Kh1 Rf8 27.Qxe4 Rf4 28.Qe3 Qh4
29.Kh2 Bc8 30.Rd4 g5 31.Rxd6+ 1-0

2001 North Carolina Closed

♔ David Jenkins (1587)
♚ Robert Botelho (1366)
Charlotte, NC
September, 2001

1.d4 Nf6 2.Nc3 d5 3.e4 dxe4 4.f3 exf3
5.Qxf3 Qxd4 6.Be3 Qg4 7.Qf2 Nc6 8.
Nf3 e5 9.Bb5 Bd7 10.O-O Be7 11.Bxc6
Bxc6 12.Nxe5 Qe6 13.Bd4 O-O-O 14.
Rae1 Ng4 15.Qxf7 Qd6 16.Qf5+ Bd7
17.Nb5 Qxd4+ 18.Nxd4 Bxf5 19.Rxf5
Nxe5 20.Rfxe5 Bf6 21.Ne6 Bxe5 22.
Nxd8 Bd4+ 23.Kh1 Rxd8 24.b3 Bf2 25.
Rf1 Rd2 26.Rc1 Re2 0-1

2001 North Carolina Closed

♔ Chris Griffin (1256)
♚ Al Carlson (1331)
Charlotte, NC
September, 2001

1.e4 d6 2.d4 Nf6 3.Nc3 g6 4.f4 Bg7 5.
Nf3 c5 6.Bb5+ Bd7 7.Bxd7+ Nfxd7 8.
Be3 cxd4 9.Bxd4 Bxd4 10.Qxd4 O-O
11.O-O Nc6 12.Qd2 Rc8 13.Rad1
Qb6+ 14.Kh1 Qxb2 15.Rb1 Qa3 16.
Rxb7 Qa6 17.Rbb1 Rb8 18.e5 Rxb1
19.Rxb1 Rb8 20.Rxb8+ Nxb8 21.Qd3
dxe5 22.Qxa6 Nxa6 23.Nxe5 Nxe5 24.
fxe5 Nb4 25.Nb5 a5 26.c4 Nxa2 27.
Kg1 Nb4 28.c5 Nc6 29.Kf2 Nxe5 30.
Ke3 Kf8 31.Kd4 Nc6+ 32.Kc4 f5 33.
Na3 e5 34.Kb5 Nd4+ 35.Kb6 Ke8 36.
c6 Kd8 37.Kb7 Ne6 38.Nb5 a4 39.Kb8
e4 40.Nd4 Nc7 41.Nc2 f4 42.Kb7 e3
43.Kb6 e2 44.Ka5 a3 0-1



2001 North Carolina Closed

♔ Euphemia Mu (1276)
♚ Chris Griffin (1256)
Charlotte, NC
September, 2001

1.c4 c5 2.Nc3 Nc6 3.g3 g6 4.Bg2 Bg7 5.
e3 Nf6 6.Nge2 O-O 7.O-O d6 8.Rb1
Bd7 9.a3 Qc8 10.Re1 Bh3 11.Bh1 Bg4
12.b4 cxb4 13.axb4 Ne5 14.d3 Nf3+ 15.
Bxf3 Bxf3 16.Qb3 e5 17.Nf4 exf4 18.
Ne2 Bxe2 19.Rxe2 f3 0-1

2001 North Carolina Closed

♔ Euphemia Mu (1276)
♚ Robert Rhyne (1301)
Charlotte, NC
September, 2001

1.c4 e6 2.g3 d5 3.cxd5 exd5 4.Bg2 c6 5.
e3 Nf6 6.Nc3 Bd6 7.Nf3 Be6 8.O-O
Nbd7 9.d3 Bf5 10.e4 Bg4 11.h3 Bxf3
12.Qxf3 dxe4 13.Nxe4 Nxe4 14.Qxe4+
Be7 15.Re1 Nf6 16.Qe5 h6 17.b3 Rc8
18.Ba3 Rc7 19.Re3 b6 20.Bd6 Rd7 21.
Bxc6 Kf8 22.Bxd7 Bxd6 23.Qxd6+ Kg8
24.Rae1 Qxd7 25.Qxd7 Nxd7 26.Re8+
Kh7 27.Rxh8+ Kxh8 28.Re7 Nc5 29.d4
Nd3 30.d5 Nb4 31.d6 Kh7 32.Rxa7
Nc6 33.Rxf7 Ne5 34.Rc7 Nf3+ 35.Kh1
Ne5 36.d7 Nxd7 37.Rxd7 b5 38.Rb7 h5
39.Rxb5 g6 40.h4 Kh6 41.a4 g5 42.Rxg5
Kh7 43.Kg2 Kh8 44.Kf3 1-0

2001 North Carolina Closed

♔ David Jenkins (1587)
♚ Chris Mabe (1460)
Charlotte, NC
September, 2001

1.d4 Nf6 2.Nc3 d5 3.e4 dxe4 4.f3 exf3
5.Qxf3 Qxd4 6.Be3 Qb4 7.O-O-O Bg4
8.Nb5!! Diagram NCC-2 e6 9.Nxc7+ Ke7
10.Qxb7!! Qa5 11.Bc5+ 1-0

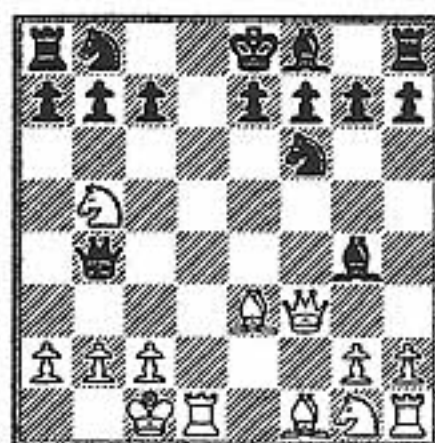


Diagram NCC-2

2001 North Carolina Closed

♙ Steven Sigmon (1093)

♙ Frank Mu (1121)

Charlotte, NC

September, 2001

1.e4 e5 2.Nf3 Nc6 3.Bb5 Bc5 4.a3 d6 5.O-O Nf6 6.d3 h6 7.Nc3 O-O 8.Na4 Bb6 9.Nxb6 axb6 10.c3 Bg4 11.h3 Bh5 12.Be3 Ne7 13.Kh1 c6 14.Bc4 b5 15.Ba2 Qc7 16.Rg1 d5 17.exd5 cxd5 18.g4 Bg6 19.Nh4 Kh8 20.Nxg6+ Nxg6 21.g5 hxg5 22.Bxg5 Qd6 23.Bxf6 Qxf6 24.Bxd5 Qxf2 25.Qh5+ Kg8 26.Rxg6 Qxb2 27.Rag1 1-0

2001 North Carolina Closed

♙ Dominick Bambara (1212)

♙ Robert Renner (1550)

Charlotte, NC

September, 2001

1.b3 e5 2.Bb2 Nc6 3.e3 d6 4.c4 Nf6 5.a3 Be7 6.Qc2 O-O 7.Nc3 Re8 8.Nf3 Bf8 9.Bd3 g6 10.O-O Bg7 11.h3 Qe7 12.Ng5 Nd8 13.Nce4 Ne6 14.b4 b6 15.g4 Bb7 16.Rhf1 a5 17.Nxf6+ Qxf6 18.Be4 Bxe4 19.Nxe4 Qe7 20.b5 Ng5 21.Nxg5 Qxg5 22.f4 exf4 23.exf4 Bxb2+ 24.Kxb2 Qf6+ 25.Qc3 Qxc3+ 26.Kxc3 Re2 27.Rde1 Rae8 28.Rxe2 Rxe2 29.Kd3 Rh2 30.Rf3 Rh1 31.Kd4 Rh2 32.Ke3 Rh1 33.Ke4 Re1+ 34.Re3 Rxe3+ 35.dxe3 Kf8 36.Kd5 Ke7 37.Kc6 Kd8 38.e4 f6 39.h4 h5 40.g5 fxg5 41.fxg5 Kc8 42.Kd5 Kd7 43.e5 dxe5 44.Kxe5 Ke7 45.a4 Kf7 46.Kd5 Ke7 47.c5 Kd7 1/2-1/2

ROADRAGE!!!

2001 Snowstorm Special

♙ David Causey (1984)

♙ Patrick McCartney (1929)

Charleston, SC

25 February, 2001

Notes by Patrick McCartney

1.d4 Nf6 2.c4 g6 3.Nc3 Bg7 4.e4 d6 5.f3 O-O 6.Be3 Nc6 7.Nge2 a6 8.Qd2 Rb8 9.Nc1 e5 10.d5 Nd4 11.Be2 The main reply is 11.N1e2 and then Black has the option of playing 11...c5 12.dc6 Nc6 or else 11...Ne2 12.Be2 Nh5 leading to roughly equal play in both cases. b5 12.cxb5 Nxb5 13.Nxb5 axb5 14.b4 Ne8 With White's last move stopping Black's play on the queenside, he shifts his focus over to the kingside. 15.O-O f5 16.exf5 Black's attack on the kingside is at a lightning speed, and while this move stops the immediate 16...f4, it doesn't help White all that much in the long run.gxf5 17.Nb3 f4 18.Ba7?! I do not like this move for white. It seemed as though the only hope, if any, was to play 18.Bf2, and answering 18...Qg5 with 19.g3 though Black still would have a clear advantage. Ra8 19.Na5 Qg5! This wins at least an exchange for Black as he has the twin threats of 20...Rxa7 now that White no longer has the fork on c6, and in response to 20.Bf2, 20...Bh3 forcing White to give up the exchange on f1 20.Nc6 Bd7 Threatening to remove the guard, and at the same time, maintain the possibility to play Bh3 if White retreats the bishop. 21.a4 White is willing to give up the piece in order to get advanced pawns on the queenside. Bxc6 22.dxc6 Rxa7 23.axb5 Rxa1 24.Rxa1 e4! 25.Ra7 exf3 Practically forcing the bishop away from guarding the b5 pawn, and allowing black to remove a lot of the pressure with the queenside pawns. 26.Bxf3

Qxb5 27.Rb7 Qe5 28.Kf1 Qa1+ 29.Ke2 Qb2 Another interesting possibility is 29...Bc3 when White must watch out for the possible mating attacks with the queen coming to e1. 30.Qxb2 Bxb2 31.Bg4 Bd4 32.Bd7 Bb6 33.Rb8 Nf6 It may have been better to play 33...Kf7 intending 34...Ke7, but that is not completely clear. It does prevent the following combination though that White has to make things a bit more complicated for Black, but either way Black should come out on top. 34.Rxb6 cxb6 35.Be6+ Kg7 36.c7 Nd5! 37.c8=Q Rxc8 38.Bxc8 Nxb4 in return for being up the piece, Black will be up a pawn, as the f-pawn is going to drop, along with having 2 disconnected passed pawns. The one inconvenience for Black is that all pawn promotions are on light squares, the squares the bishop controls. 39.Kf3 Nd5 40.Bb7 Nc3 41.Kxf4 Kf6 42.Ke3 White has nothing better, as the Black knight covers d4. White will eventually have to give way to the Black king at some point anyway, might as well do it now. Ke5 43.Kd3 Nd5 44.Kc4 Ne3+ 45.Kd3 Nf1 46.h3 Ng3 47.Kc4 Nf5 48.Kb5 d5 49.Kxb6 d4 50.Kc7 d3 51.Kd7 Nh4 While this move works, even better was 51...Nd4!! And the pawn will promote immediately as all entries for the White bishop are covered. 52.Bc6 d2 53.Ba4 Nxg2 54.Ke7 Kf5 55.Kf7 Kg5 56.Kg7 h5 57.h4+ Nxh4 58.Bd1 Kf4 0-1



North Carolina players on the USCF Top 100 lists.

Courtesy of the U.S. Chess Website www.uschess.org

Quick and Correspondence weren't listed

Overall:

22. GM Julio Becerra 2582
82. IM Jonathan Schroer 2471

Women:

7. WGM Martha Fierro 2341
77. Jacqueline Guglielmi 1653
93. Sara R. Walsh 1532

Under age 21:

23. Matthew Hoekstra 2314
54. Justin Dale Daniel 2174

Ages 17-18:

7. Matthew Hoekstra 2314
17. Justin Dale Daniel 2174
78. Thomas C. Adams 1858
84. Ben Stewart 1847

Ages 15-16:

50. Daniel Tapia 1921
61. Robert A Walker 1889

Ages 13-14:

51. Nelson Lopez II 1772

Girls under 16:

38. Euphemia Mu 1349
44. Nisha M George 1293
88. Amelia Wheelless 1155
92. Colette Wheelless 1149

Girls under 13:

15. Nisha M George 1293
40. Amelia Wheelless 1155

Bethany's Birthday Grand Prix Chess

Friday - Saturday, October 5-6, 2001

Hendersonville, NC (north of Greenville-Spartanburg, SC)

10 Grand Prix Points

Play chess and celebrate her birthday (she'll be 9!)

Site: The Mountain Community School
802C Old Spartanburg Rd, Hendersonville NC 29892

4 Rounds Swiss System

2 Sections: Cash Prizes, Trophy-Only

Time Control: 40/75, SD/15, 30 sec/move added
(or G/120 without capable digital clock)

Rounds:

Friday 8:00 pm - Saturday 9:00 am - 1:30 pm - 6:00 pm
Cake and ice cream at 5:30 pm Saturday

Directions: From I-26 Exit 22

West on Upward Rd 1 mile

Right onto US-176, go 1.5 miles

Right onto Old Spartanburg Rd just after crossing bridge

After 200 yards, right into school

Hotels:

complete list of motels, B&B's, and inns available at

<http://www.historichendersonville.org/>

One 1/2-pt bye any round; experts and above may take full-point bye in round 1.

A birthday present for Bethany gets you free reentry into round 2 with 1/2-pt bye.

Entry Fees:

Cash Prizes: \$20 preregistered; \$25 at site.

Trophy-Only: \$5 + a birthday present for Bethany

Cash Prizes (\$500 b/32): \$125 - 100 - 75

Best in top quarter: \$50

Best in 2nd quarter: \$50

Best in 3rd quarter: \$50

Best in 4th quarter: \$50

Trophy-Only Section: 1st - 2nd - 3rd

\$300 prize money guaranteed for master eligibility.

Bethany's Birthday Grand Prix Chess

Unrated players will be assigned a rating for pairing and prize purposes.
Accelerated and class pairings.

FIDE Rules

Enter: Kevin Hyde, RR 1 Box 35A, Saluda NC 28773, 828-749-1625

North Carolina Chess Association Club Directory

Asheville North Asheville Community Center. Wednesdays 6:30pm-10:30pm Contact: Jim Johnson (828)298-9254 Club Phone (828) 258-2453

Asheboro Public Library, corner of Worth and Cox. Tuesdays 6pm-9pm Contact Tom Hales (910)625-0761

Burlington Forest Hills Community Center. 227 Williamson St. Tuesdays 7:00pm-10:00pm Contact: Ron Garrett (336)584-6931

Camp Lejeune (Chess Beast Chess Club) Central Area Rec. Center (910)451-1942

Cary Borders Books at the corner of Walnut and Jones Franklin, just off US 1/64. Saturdays 2PM-6PM.

Chapel Hill-Carrboro Skylight Exchange. 435½ Rosemary St. Wednesdays 6pm-8pm. Open mic night afterwards.

Charlotte (<http://www.charlottechess.com>) Wednesday's 7-11 Wendy's 434 S. Independence Blvd. Contact : Leland Fuerstman (704) 643-3821 30/1 tournament game for members each meeting. \$100 for 5-0 in a session!

Cherry Point Road House (252)466-3027

Durham Bread and Kabob, 1013 W. Main St. Call Bashir Loynab for date and time (919)680-3399

Elkin (Yadkin Valley Chess Club) Shoney's at I-77 Exit 82 Tuesdays 7:00pm-11:00pm Contact: Scott Baldwin (910)368-2018 Chad Eller (910)667-3475 Steve Greenlee (910)835-6389

Fayetteville Kiwanis/Honeycutt Recreation Center. 353 Devers St. Thursday 5:00pm-9:00pm Contact: Paul Hughes (910)424-7489

Fayetteville Joe Muggs Cafe at Books-a-Million. 1920 Skibo Rd. Fridays 7:00PM-10:00pm Contact: Paul Hughes (910)424-7489

Gastonia (Gaston County Chess Club) YMCA - 615 W. Franklin Blvd. Thursdays 7:00pm-10:00pm Saturdays 9:00pm-Until Contact: Carl Hanna (704)865-1515 Bob Muhl (704) 827-0874 Milton Tager (704)865-0421

Greensboro Folk Recreation Center. 3910 Clifton Rd. Mondays & Wednesdays 7:00pm-10:00pm Contact: Richard Ward (336)852-2854

Hendersonville Henderson County Public Library, (upstairs) 201 N. Washington St. Friday 1:00pm-4:30pm Contact: Charles Palmer (828)891-8968

Hickory (Masters of War Chess Club) Westmont Seniors Center. 1316 Main Avenue Drive NW. Tuesdays 5:15pm-Until Contact: "Bones" (828)874-3660

High Point Oakview Rec. Ctr. 540 James Rd. Tuesdays 7pm-10pm. Contact: Rick Sawyer (910)884-4444

Jacksonville (USO Chess Club) 9 Tallman St. Sundays 1:00pm-Late evening. Speed Chess & Match Play Contact: Jeff Walsh (910) 346-8349 E-mail: cn1404@coastalnet.net

Lenoir Contact: John Thomas

Monroe St. Paul's Episcopal Church, 116 South Church St. Wednesdays 7:00pm-Until Contact: Irvin Engles

New River MCAS Base Command Center (910)937-5015

Raleigh Kiwanis Park Community Center. 2525 Noble Rd. Fridays 7:00pm-11:30pm Contact: Nita Witting E-mail: look-ing@mindspring.com

Smithfield Public Library at the corner of 3rd and Market. Mondays from 7PM-9PM. Contact: Jeff Jones (919)250-9717

Southern Pines (Southern Pines Chess Club) Contact: Dan Garrett (910)692-6246 PO Box 144 Southern Pines, NC 28388 E-mail: dg@pinehurst.net

Statesville Mitchell Community College Student Union Building - 2nd floor West Broad St. Thursdays 6:00pm-Until Contact: Jim Brandenburg (704)871-1782

Washington 7th Street Recreation Center 7pm-10pm Mondays. Contact: John Wehrenberg (252)946-4419

Wilmington (Seahawk Chess Club) Thursdays 7PM-11PM. Books a Million, Oleander Dr.

Winston-Salem Thursdays 7:30pm-Until Contact: Lee Zinzow (336)765-0753



Other Clubs and Sources of information

CMSCA (Charlotte-Mecklenberg Scholastic Chess Association) <http://pweb.netcom.com/~gerben/cmsca.html>

Fort Mill, SC Scott gru-Bell (803)548-0952

Greenville, SC Wayne Williams (864)246-6363

HCSCP (Henderson County Scholastic Chess Program) Charles Palmer (828)891-8968

Hillsville, VA T. Scott Brown (540)728-7774 John Martin (540)728-4273

Rock Hill, SC Pete Danker (803)548-0955

SCCA (South Carolina Chess Association) Mike Spohn = President <http://www.scchess.org>

Classifieds

NM Leland Fuerstman offers chess instruction. Call (704)542-7225 or e-mail lelandf@juno.com for details

Damon Smith is looking for A and B class players for rated matches. For info call (336)655-3426.

The 2001 Carolinas Open

Raleigh's first Open FIDE-rated tournament!!!!

Championship section!!!

5-SS 40/2 G/1 FIDE RATED!!!!

EF:\$50 (by 10/22) /\$60 at site +\$10 for u1800

PRIZES: \$2000 b/50

1st: \$600 + plaque (500 G)

2nd: \$300 + plaque (250G)

3rd: \$250 + plaque (150G)

4th: \$200 (100G)

5th: \$150

6th: \$100

X: \$200 + plaque (b/10)

U2000: \$200 + plaque (b/10)

Plaques to top 2 juniors as well.

Unrateds may not win class prize, but may win open 1st-6th.

Rounds: Fri. 8PM or Sat. 10AM (SD/1)

then Sat. 12:30PM - 7PM, Sun. 9AM-3PM

Optional re-entry: \$35, must play Rd.1 Saturday.

Counts as 1/2 EF.

Amatuer section!!! (under 1800)

6-SS 25/80 G/60

EF:\$40 (by 10/22) /\$50 at site

PRIZES: \$2100 b/65

1st: \$500 + plaque

2nd: \$250 + plaque

3rd: \$220 + plaque

4th: \$170

5th: \$140

6th: \$100

B,C,D each: \$180 + plaque (b/10)

U1200: \$180 + plaque (b/10)

Plaques to top 4 juniors as well

Unrateds may not play for cash, see special entry info below

Rounds: 8PM Fri. - 10AM Sat. or 10AM Sat. (SD/1) -

12:30 PM (SD/1) then Sat. 3PM-8PM, Sun. 9AM-2PM

Optional re-entry: \$30, must play round 1 Saturday.

Counts as 1/2-EF

Chief TD:

Robert Singletary

(919)875-4288

NCTRobert@aol.com

Organizer/ENT:

Jeff Jones

313-C Roselle Ct.

Raleigh, NC 27610

(919)250-9717

RabidRook@aol.com

Special EF: for juniors and unrated in the under 1800 is

\$15 (by 10/22)/ \$20 at site. The players are eligible to win plaques, but not cash prizes. These will not count toward entry fee totals.

A junior rated under 1800 using this option to play in the open needs to add \$10 to his/her entry fees.

Tournament site and hotel: Holiday Inn: Highwoods. 2805 Highwoods Blvd. Raleigh, NC 27604 (919)872-3500. HR: \$69 per night 1-4. Take I-440 to exit 11. (US 1-401 north toward Wake Forest). Turn left at first right.

Website: chessunion.com

Click on the Carolinas Open Link.

All profits from this tournament will go to an educational fund set up for Brandon and Brittany Brown in memory of their late father Terry.

♣ North Carolina Chess Association ♣

♣ <http://www.ncchess.org> ♣

☐ Rte. 2, Box 234 ☐

♣ Old Fort, NC 28762 ♣



expire: 11/2/2002
Baxter Kenneth J
16200 Blarney Rd.
Mooresville, NC 28115